

8

LANDSCAPE & EXTERIOR IMPROVEMENTS



COLLEGE
of the
DESERT



IMAGE 8.3.2 | Agave americana- Century Plant

1. Use sparingly, will expire after blooming
2. Avoid planting near walkways
3. Up to about 6 feet tall without flower stalk
4. Makes a great landscape focal point or accent
5. Needs annual insecticide treatment
6. Minimum irrigation near the base of the plant



IMAGE 8.3.3 | Agave americana 'Mediopicta' - Mediopicta Variegata

1. Use sparingly, will expire after blooming
2. Avoid planting near walkways
3. Grows up to 2-3 feet tall and 2-4 feet wide
4. Needs annual insecticide treatment
5. Minimum irrigation near the base of the plant



IMAGE 8.3.1 | Agave 'Blue Glow'- Blue Glow Agave

1. Avoid planting near walkways
2. Succulent that forms clumps with rosettes
3. Grows up to 2-3 feet tall and 3-4 feet wide
4. Needs annual insecticide treatment
5. Ensure adequate spacing for maintenance personnel
6. Minimum irrigation near the base of the plant



IMAGE 8.3.3 | Agave biovornuta - Cow Tongue

1. Use sparingly, will expire after blooming
2. Avoid planting near walkways
3. Grows up to 2-3 feet tall and 2-4 feet wide
4. Needs annual insecticide treatment
5. Minimum irrigation near the base of the plant

8A | PLANTING PALETTE (CONT)



IMAGE 8.3.4 | Agave parryi – Parry’s Agave

1. Avoid planting near walkways
2. Low growing
3. Succulent that forms clumps with rosettes
4. Needs annual insecticide treatment
5. Minimum irrigation near the base of the plant

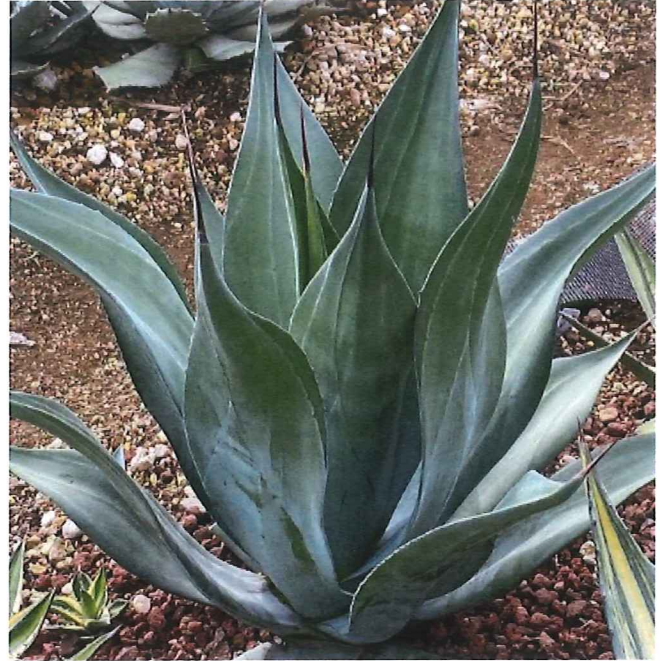


IMAGE 8.3.6 | Agave weberi – Weber’s Agave

1. Large specimen plant
2. Keep space along walkways for mature growth
3. No spines or sharp edges
4. Needs annual insecticide treatment
5. Minimum irrigation near the base of the plant



IMAGE 8.3.6 | Agave vilmoriniana – Octopus Agave

1. Large specimen plant
2. Keep space along walkways for mature growth
3. No spines or sharp edges
4. Needs annual insecticide treatment
5. Minimum irrigation near the base of the plant



IMAGE 8.3.5 | Agave victoriae-reginae – Queen Victoria Agave

1. Avoid planting near walkways
2. Has small spines
3. Use plant in masses
4. Needs annual insecticide treatment
5. Ensure adequate spacing for maintenance personnel
6. Minimum irrigation near the base of the plant

8A | PLANTING PALETTE (CONT)



IMAGE 8.3.7 | *Anisacanthus* spp. -Desert Honeysuckle

1. Accent planting
2. Mexican Fire or Mexican Flame as acceptable varieites
3. Plant sparingly, use in low maintainnce areas
4. Keep space along walkways for mature growth



IMAGE 8.3.7 | *Bougainvillea spectabilis* 'Torchglow'-
Torchglow Bougainvillea

1. Large specimen plant
2. Avoid planting near walkways
3. Small thorns
4. Do not use vining Bougainvillea spp. (only shrub varieities)



IMAGE 8.3.43 | *Buchloe dactyloides* 'UC Verde' -
UC Verde Buffalo Grass

1. Use as Turf alternative
2. Use sparingly for recreation areas or community gathering spaces



IMAGE 8.3.10 | *Caesalpinia mexicana*-
Mexican Bird of Paradise

1. Large specimen plant
2. Keep space along walkways for mature growth
3. Summer bloom/ winter dormant

8A | PLANTING PALETTE (CONT)



IMAGE 8.3.13 | *Cassia armata*- Desert Senna

1. Plant in large masses
2. Keep space along walkways for mature growth
3. Flowering spring through summer



IMAGE 8.3.13 | *Cassia artemisioides* - Feathery Cassia

1. Plant in large masses
2. Keep space along walkways for mature growth
3. Flowering spring through summer

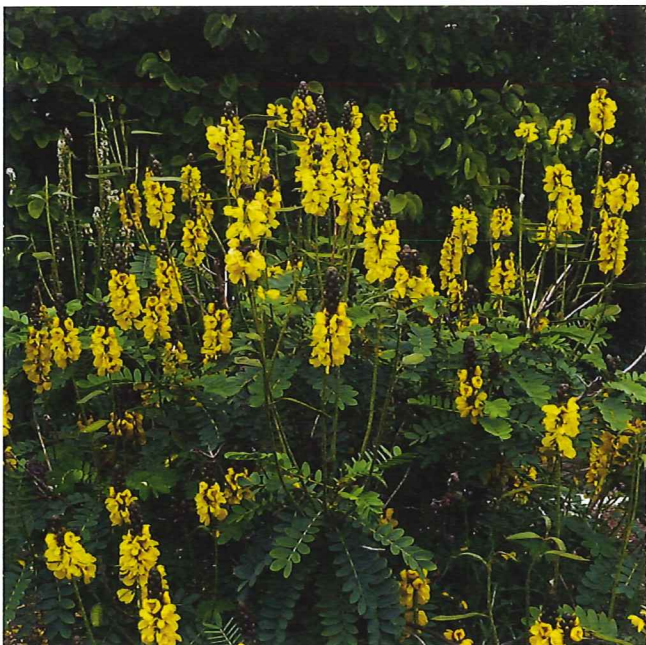


IMAGE 8.3.13 | *Cassia didymobotrya*- Popcorn Cassia

1. Plant in large masses
2. Keep space along walkways for mature growth
3. Flowering spring through summer



IMAGE 8.3.13 | *Cassia nemophilla*- Green Feathery Cassia

1. Plant in large masses
2. Keep space along walkways for mature growth
3. Flowering spring through summer

8A | PLANTING PALETTE (CONT)



IMAGE 8.3.15 | *Convolvulus cneorum*- Silver Bush Morning

1. Use as a groundcover
2. Plant in large masses
3. Flowering spring through summer



IMAGE 8.3.15 | *Convolvulus mauriancticus* -
Ground Morning Glory

1. Use as a groundcover
2. Plant in large masses
3. Flowering spring through summer



IMAGE 8.3.16 | *Dalea capitata* - Golden Dalea

1. Use as a groundcover
2. Plant in large masses
3. Flowering spring through summer
4. Requires partial shade



IMAGE 8.3.16 | *Dalea frutescens*- Bush Dalea

1. Sierra Negra and other varieties are acceptable
2. Plant in large masses
3. Flowering spring through summer

8A | PLANTING PALETTE (CONT)



IMAGE 8.3.22 | Eremophila hygrophana - Blue Bells

1. Plant in large masses
2. Keep space along walkways for mature growth
3. Flowering spring through summer



IMAGE 8.3.22 | Eremophila maculata 'Valentine' - Valentine Emu Bush

1. Plant in large masses
2. Keep space along walkways for mature growth
3. Flowering spring through summer



IMAGE 8.3.22 | Eremophila racemosa- Easter Egg Emu Bush

1. Plant in large masses
2. Keep space along walkways for mature growth
3. Flowering spring through summer



IMAGE 8.3.25 | Euphorbia ingens- Candelabra Tree

1. Specimen plant
2. Plant away from walkways
3. Grows up to 25 feet
4. Requires partial shade

8A | PLANTING PALETTE (CONT)



IMAGE 8.3.27 | Hesperaloe-parviflora - Redflower false yucca

1. Accent plant
2. Keep space along walkways for mature growth
3. Use plant as a massing
4. Flowering spring to summer



IMAGE 8.3.28 | Hesperaloe-parviflora-Brakelights - Red Yucca

1. Accent plant
2. Use plant as a massing
3. Flowering spring to summer



IMAGE 8.3.32 | Lantana x 'New Gold'- New Gold Lantana

1. Use as a groundcover
2. Plant in large masses
3. Keep space along walkways for mature growth
4. Flowering spring to summer



IMAGE 8.1.5 | Lantana montevidensis- Purple Lantana

1. Use as groundcover
2. Plant in large masses
3. Use sparingly, looks dead and scraggly in summer
4. Flowering winter through spring

8A | PLANTING PALETTE (CONT)



IMAGE 8.3.36 | *Leucophyllum* 'Sierra Bouquet'-
Sierra Bouquet Sage

1. Plant in large masses
2. Keep space along walkways for mature growth
3. Flowering spring to summer



IMAGE 8.3.36 | *Ligustrum japonicum*
Wax Leaf Privet

1. Large screen shrub
2. Keep space along walkways for mature growth
3. Flowering spring to summer
4. Requires partial shade
5. Can use texanum or other varieties



IMAGE 8.3.37 | *Nolina parryi* - Parry's Beargrass

1. Large specimen plant
2. Avoid planting near walkways
3. Ensure adequate spacing for maintenance personnel
4. Minimum irrigation near the base of the plant



IMAGE 8.3.37 | *Phyla nodiflora*- Lippia

1. Use as Turf alternative
2. Can be mowed and take high traffic

8A | PLANTING PALETTE (CONT)



IMAGE 8.3.39 | *Pedilanthus bracteatus* - Tall Slipper Plant

1. Accent Plant
2. Keep space along walkways for mature growth



IMAGE 8.3.40 | *Pedilanthus macrocarpus* - Slipper Plant

1. Accent Plant
2. Keep space along walkways for mature growth



IMAGE 8.1.4 | *Ruellia peninsularis* Desert Ruellia

1. Plant in masses
2. Goes semi dormant and leggy use sparingly
3. Keep space along walkways for mature growth



IMAGE 8.1.8 | *Russelia equisetiformis* - Coral Fountain

1. Plant in large masses
2. Keep space along walkways for mature growth
3. Flowering spring to summer

8A | PLANTING PALETTE (CONT)



IMAGE 8.3.44 | Xylosma congestum- Shiny Xylosma

1. Large screen shrub
2. Keep space along walkways for mature growth



IMAGE 8.3.45 Yucca gloriosa var. recurvifolia 'Walbristar' - Bright Star Yucca

1. Large specimen plant
2. Avoid planting near walkways
3. Ensure adequate spacing for maintenance personnel
4. Minimum irrigation near the base of the plant



IMAGE 8.3.44 | Yucca gloriosa - Spanish Dagger

1. Large specimen plant
2. Avoid planting near walkways
3. Ensure adequate spacing for maintenance personnel
4. Minimum irrigation near the base of the plant



IMAGE 8.3.46 | Yucca recurvifolia - Soft Leaf Yucca

1. Large specimen plant
2. Avoid planting near walkways
3. Ensure adequate spacing for maintenance personnel
4. Minimum irrigation near the base of the plant

8A | PLANTING PALETTE (CONT)



IMAGE 8.4.6 *Bismarckia nobilis* - Bismarck Palm Tree

1. Palm Tree
2. Accent Tree



IMAGE 8.4.7 *Brahea armata* - Mexican Blue Palm

1. Palm Tree
2. Accent Tree



IMAGE 8.4.7 *Brahea edulis*- Guadalupe Island Palm

1. Palm Tree
2. Accent Tree



IMAGE 8.4.8 *Caesalpinia cacalaco* - Thornless Cascalote

1. Small Tree
2. Accent Tree
3. Semi Deciduous
4. Flowering spring to summer

8A | PLANTING PALETTE (CONT)



IMAGE 8.2.2 | *Cycas revoluta*-Sago Palm

1. Thirsty plant, use sparingly
2. Use near water features
3. Requires afternoon shade



IMAGE 8.2.4 | *Callistemon viminalis*- Weeping Bottle Brush

1. Thirsty and messy plant, use sparingly
2. Large Tree
3. Evergreen



IMAGE 8.2.4 | *Dalbergia sissoo*- Sisso Tree

1. Large Canopy
2. Shade Tree
3. Evergreen
4. Use a parking lot tree



IMAGE 8.6.5 | *Eysenhardtia texana*- Texas Kidneywood

1. Small canopy
2. Semi-Deciduous

8A | PLANTING PALETTE (CONT)



IMAGE 8.2.4 | *Lysiloma microphylla var thornberi* - Feather Tree

1. Small Tree
2. Dapple shade
3. Semi Deciduous



IMAGE 8.4.12 | *Olea Europaea 'Swan Hill'* - Swan Hill Olive Tree

1. Shade tree
2. Large canopy
3. Evergreen
4. Only plant fruitless varieties



IMAGE 8.4.13 | *Olneya tesota* - Desert Ironwood

1. Large canopy
2. Semi Deciduous
3. Use sparingly, has large thorns and messy



IMAGE 8.4.14 | *Phoenix dactylifera* - Date Palm

1. Plant in Rows
2. Palm Tree
3. Seasonal fruit treatment in high traffic areas.

8A | PLANTING PALETTE (CONT)



IMAGE 8.4.19 | *Quercus fusiformis* - Texas Live Oak

1. Shade Tree
2. Medium canopy
3. Evergreen
4. Use as parking lot tree



IMAGE 8.4.20 | *Tipuana tipu* - Tipu Tree

1. Shade Tree
2. Large canopy
3. Evergreen
4. Use a parking lot tree
5. Anticipate final size near buildings



IMAGE 8.4.19 | *Washingtonia x filibusta*- Hybrid Fan Palm

1. Replace all *W. robusta* with hybrid
2. Palm Tree
3. Plant in Rows along entries
4. Must trim skirt when near buildings and walkways

8A | PLANTING PALETTE (CONT)



IMAGE 8.5.4 | *Baccharis x 'Starn Thompson'* - Prostrate Coyote Bush

1. Habitat plant
2. Plant as a massing groundcover
3. Keep space along walkways for mature growth
4. Larger varieties tend to get overgrown and leggy



IMAGE 8.5.5 | *Baileya multiradiata* - Desert Marigold

1. Habitat plant
2. Biennial Plant growth will reseed use in designated areas
3. Biennial lifespan use sparingly
4. Flowering spring to summer



IMAGE 8.5.14 | *Encelia farinosa* - Brittlebush

1. Habitat Butterfly plant
2. Plant in large masses
3. Keep space along walkways for mature growth
4. Flowering spring to summer



IMAGE 8.5.17 | *Ericameria laricifolia Aguirre* - Turpentine Bush

1. Habitat Butterfly plant
2. Plant sparingly, use in low maintenance areas
3. Keep space along walkways for mature growth
4. Flowering spring to summer

8A | PLANTING PALETTE (CONT)



IMAGE 8.3.29 | Hesperoyucca whipplei - Our Lord's Candle

1. Large specimen plant
2. Avoid planting near walkways
3. Sharp leaves
4. Ensure adequate spacing for maintenance personnel
5. Minimum irrigation near the base of the plant



IMAGE 8.5.24 | Justicia californica - Chuparosa

1. Habitat plant
2. Plant in large masses
3. Keep space along walkways for mature growth
4. Flowering spring to summer



IMAGE 8.5.25 | Larrea tridentata - Creosote Bush

1. Habitat plant
2. Plant in large masses
3. Keep space along walkways for mature growth



IMAGE 8.5.29 | Nolina bigelovii - Bigelow Nolina

1. Avoid planting near walkways
2. Large Specimen Plant
3. Flowering in spring
4. Ensure adequate spacing for maintenance personnel
5. Minimum irrigation near the base of the plant

8A | PLANTING PALETTE (CONT)



IMAGE 8.5.37 | Penstemon Parryi - Parry's Penstemon

1. Habitat plant
2. Accent plant
3. Keep space along walkways for mature growth
4. Flowering in spring
5. Short bloom time, use sparingly



IMAGE 8.5.40 | Peritoma Arborea - Bladderpod

1. Habitat plant
2. Plant sparingly, use in low maintenance areas
3. Keep space along walkways for mature growth
4. Flowering in spring



IMAGE 8.5.47 | Salvia clevelandii- Cleveland Sage

1. Habitat plant
2. Plant in large masses
3. Keep space along walkways for mature growth
4. Flowering in spring



IMAGE 8.5.47 | Salvia leucophylla - Purple Sage

1. Habitat plant
2. Plant in large masses
3. Keep space along walkways for mature growth
4. Flowering in spring

8A | PLANTING PALETTE (CONT)



IMAGE 8.5.52 | Yucca pallida - Pale-Leaf Yucca

1. Avoid planting near walkways
2. Specimen Plant
3. Ensure adequate spacing for maintenance personnel
4. Minimum irrigation near the base of the plant



IMAGE 8.5.53 | Yucca rigida - Blue Yucca

1. Large spines
2. Avoid planting near walkways
3. Large Specimen Plant
4. Ensure adequate spacing for maintenance personnel
5. Minimum irrigation near the base of the plant



IMAGE 8.5.55 | Yucca Baccata - Banana Yucca

1. Large spines
2. Avoid planting near walkways
3. Large Specimen Plant
4. Ensure adequate spacing for maintenance personnel
5. Minimum irrigation near the base of the plant



IMAGE 8.5.56 | Yucca Rostrata - Beaked Yucca

1. Large spines
2. Plant away from walkways
3. Large Specimen Plant
4. Ensure adequate spacing for maintenance personnel
5. Minimum irrigation near the base of the plant

8A | PLANTING PALETTE

ii. PLANTS TO AVOID

This section identifies plant materials, including groundcover, shrubs, and trees, which the District and College has deemed inappropriate for future projects at College of the Desert campuses. Architects, Designers, Landscape Architects, and Builders are instructed to refrain from using these materials. Any deviation from this directive would require written approval from District Leadership; no other individuals or entities associated with the college or private industry have the authority to alter this direction.

5. SHRUBS TO AVOID (THIRSTY INVASIVE MESSY)



IMAGE 8.1.1 | *Nassella tenuissima*-
Mexican Feather Grass

1. A highly invasive species
2. Spreads through seed heads
3. Messy, overgrown and will naturalize in open space.



IMAGE 8.1.2 | *Oenothera speciosa*-
Evening Primrose

4. A highly invasive species
5. Spreads by stoloniferous rootstocks and seeds forming a groundcover.
6. Goes dormant in the Summer



IMAGE 8.1.3 | *Pennisetum* spp.- Fountain Grass

1. A highly invasive species
2. Spreads through seed heads
3. Messy, overgrown and will naturalize in open space.

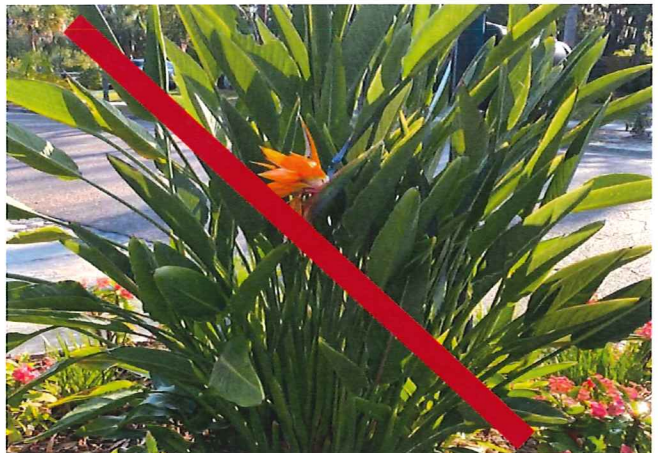


IMAGE 8.1.6 | *Strelitzia reginae* - Bird of Paradise

1. Thirsty Plant
2. Leaves get burned in summer

8A | PLANTING PALETTE (CONT)



IMAGE 8.3.20 | *Deschampsia cespitosa* - Tufted hairgrass

1. Messy plant
2. Invasive plant, seed spread through wind



IMAGE 8.3.23 | *Euphorbia milii* - Crown-of-thorns

1. Large thorns
2. Poisonous sap
3. Grows leggy over time



IMAGE 8.5.2 | *Aristida purpurea* - Purple Threeawn

1. Messy plant
2. Invasive plant, seed spread through wind



IMAGE 8.3.26 | *Euphorbia tirucalli*

1. Poisonous Sap
2. Overgrown and messy plant

8A | PLANTING PALETTE (CONT.)

6. TREES TO AVOID (THIRSTY, INVASIVE, MESSY)

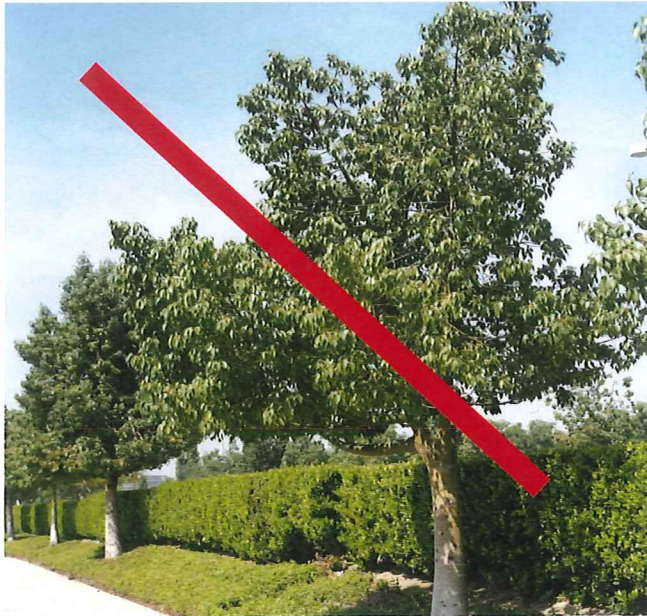


IMAGE 8.4.6 *Brachychiton populneus*- Kurrajong Bottle Tree

1. Messy Tree
2. Overgrown



IMAGE 8.2.1 | *Cocculus laurifolius* – Hindu Laurel

1. Thirsty Plant



IMAGE 8.6.5 | *Eucalyptus microtheca*- Coolibah

1. Messy Tree, sap damages walkways
2. Overgrown

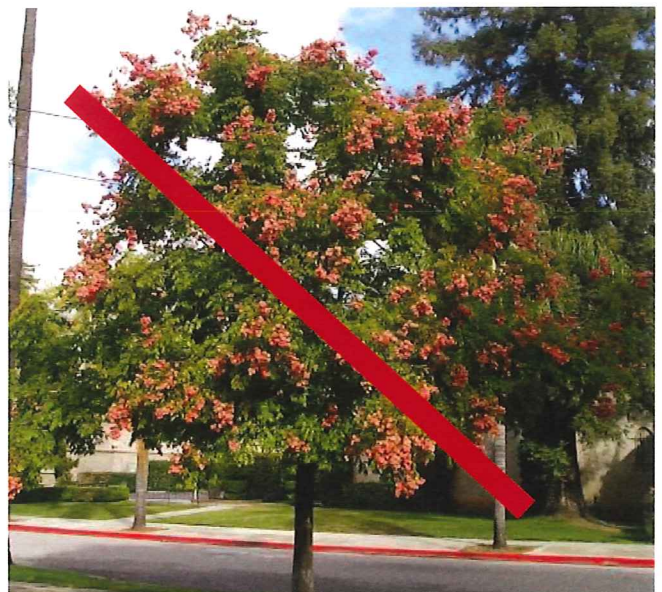


IMAGE 8.2.3 | *Koelreuteria bipinnata* - Chinese Flame Tree

1. Messy Plant , Flowers and leaves are excessive

8B | IRRIGATION STANDARDS

This section within the Design Standards serves as a collaboration of both current and future campus strategies regarding the installation of diverse irrigation systems and planting applications. College of the Desert prioritizes sustainability and the utilization of native materials, emphasizing low water usage and minimal maintenance requirements. A selection of acceptable reference details is provided to reflect these principles.

I. Irrigation Details

1. Standard Mainline/ Sleeving/ Trenching

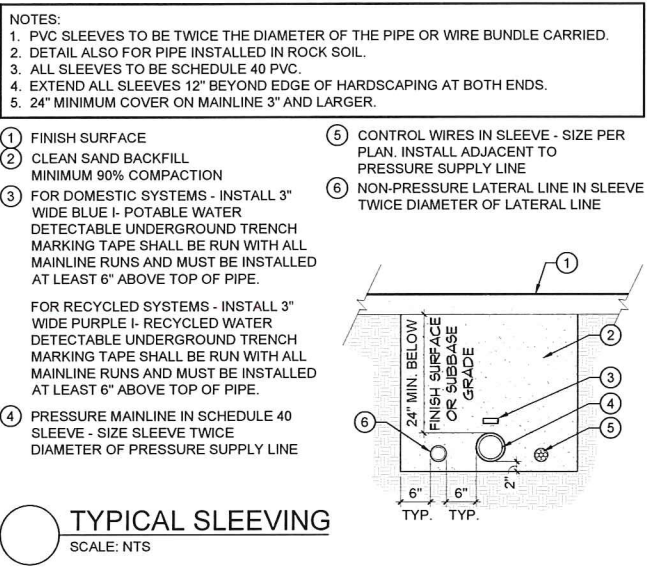
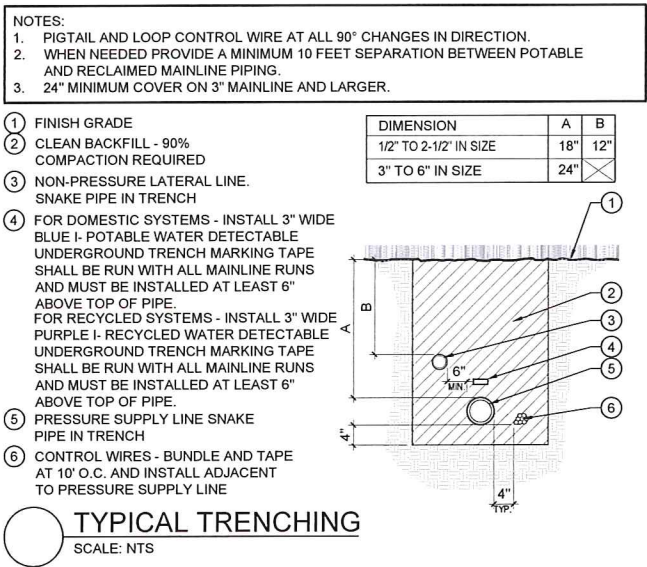


IMAGE 8.4.3 | MAINLINE TRENCHING

IMAGE 8.4.3 | SLEEVING

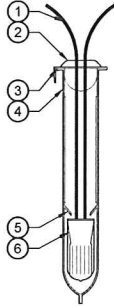
a. Product Recommendation- NDS: Pipe and Pipe fittings

8B | IRRIGATION STANDARDS

NOTES:

1. KIT SHALL INCLUDE A SCOTCHLOK Y SPRING CONNECTOR, A POLYPROPYLENE TUBE AND A WATERPROOF SEALING GEL. TUBE SHALL BE SUPPLIED PRE-FILLED WITH GEL.
2. DIRECT BURY SPlice KIT SHALL BE USED TO ELECTRICALLY CONNECT 2-3 #14 OR TWO (2) #12 PRE-STRIPPED COPPER WIRES. LARGER WIRES OR GREATER QUANTITIES OF WIRES SHALL REQUIRE A LARGER APPROVED WIRE CONNECTION.

- 1 LOW VOLTAGE WIRES, THREE (3) MAXIMUM
- 2 WIRES PASS THROUGH GROOVES IN TUBE LID TO ALLOW LID TO CLOSE
- 3 CLOSE TUBE LID AFTER WIRE IS INSERTED INTO TUBE
- 4 POLY TUBE PRE-FILLED WITH WATERPROOF GEL
- 5 LOCK TABS PREVENTS WIRE REMOVAL ONCE CONNECTOR IS INSERTED
- 6 SCOTCHLOK ELECTRICAL SPRING CONNECTOR WIRES SHALL BE PRE-STRIPPED OF 1/2" OF THE INSULATION PRIOR TO INSERTION INTO THE CONNECTOR. TWIST CONNECTOR ONTO WIRES TO SEAT FIRMLY. SCOTCHLOK CONNECTOR AND WIRES INSERTED INTO TUBE UNTIL THE CONNECTOR PASSES LOCK TABS



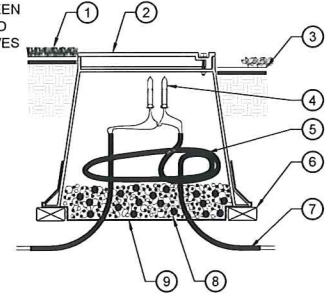
TYP. WIRE CONNECTION
SCALE: NTS

IMAGE 8.4.3 | WIRE CONNECTION

NOTES:

1. TWO-WIRE PATH IN CONDUIT ONLY IF SPECIFIED ON LEGEND, SEE LEGEND.

- 1 FINISHED GRADE IN TURF AREA
- 2 PLASTIC RECTANGULAR VALVE BOX WITH A TAN COLORED LID AND LOCK KIT. INSTALL BOX AT RIGHT ANGLE TO THE ADJACENT HARDSCAPE EDGE. HEAT BRAND "PB" ONTO LID
- 3 FINISHED GRADE IN SHRUB AREA
- 4 3M DBR/Y-6 WATERPROOF WIRE CONNECTORS
- 5 PROVIDE A 48" LONG COIL OF THE TWO WIRE PATH (FOR CONTROL VALVES, MASTER VALVE/FLOW SENSOR OR COMMUNICATION CABLE) IN EACH PULL BOX USED. PULL BOXES FOR SLEEVE CROSSING DO NOT REQUIRE WATERPROOF CONNECTORS UNLESS SPLICES ARE REQUIRED
- 6 BRICK SUPPORTS, FOUR (4) REQUIRED
- 7 TWO-WIRE PATH (CABLE) BETWEEN THE CONTROLLER AND ALL FIELD EQUIPMENT AND CONTROL VALVES
- 8 3/4" CRUSHED GRAVEL, 4" MINIMUM DEPTH
- 9 LANDSCAPE FABRIC TO COVER BOTTOM AND ALL SIDES OF VALVE BOX



PULL BOX
SCALE: NTS

IMAGE 8.4.3 | PULL BOX

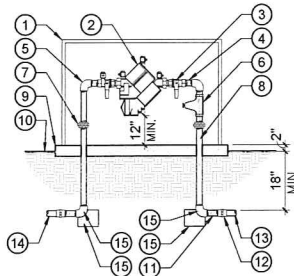
c. Product Recommendation- Wire Connection: GPH Irrigation(GDBRY 6), In-ground Box: Christy's

3. Standard Auxillary Equipment

NOTES:

1. IF WYE STRAINER OR PRESSURE REGULATOR IS SPECIFIED, INSTALL ON EITHER THE HORIZONTAL PIPING OR ON THE DOWNSTREAM LEG AS SPACE PERMITS.
2. CONCRETE SLAB SHALL BE MINIMUM 4" THICK, 18" WIDE AND EXTEND AT LEAST 8" PAST THE BACKFLOW ASSEMBLY PIPING. IF BACKFLOW ENCLOSURE IS SPECIFIED IN THE LEGEND, THE CONCRETE SLAB SHALL BE THE SIZE REQUIRED BY THE MANUFACTURER.

- 1 BACKFLOW ENCLOSURE
- 2 R/P DEVICE SEE LEGEND FOR SPECIFICATIONS
- 3 BRASS BALL VALVE (TYP.)
- 4 BRASS NIPPLES MINIMUM 4"
- 5 BRASS ELL, 4 REQUIRED
- 6 PRESSURE REGULATOR OR WYE STRAINER
- 7 BRASS UNION, 2 REQUIRED
- 8 BRASS RISERS. LENGTH AS REQUIRED
- 9 CONCRETE SLAB, SEE NOTES
- 10 FINISH GRADE
- 11 SCH 80 PVC NIPPLE 6" MINIMUM
- 12 SCH 80 PVC FEMALE ADAPTER
- 13 PVC MAINLINE TO MASTER VALVE
- 14 PVC MAINLINE FROM METER
- 15 12"x12"x12" CONCRETE THRUST BLOCK FOR 3" DIA. PIPE OR SMALLER



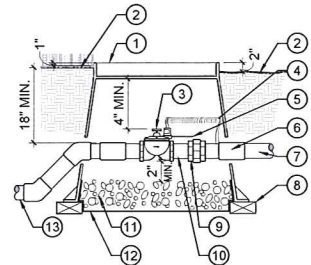
**3" AND SMALLER
REDUCED PRESSURE BACKFLOW**
SCALE: NTS

IMAGE 8.4.3 | BACKFLOW DEVICE

NOTES:

1. USE 45 DEGREE ELLS TO ACHIEVE MAINLINE DEPTH FROM UP-STREAM SIDE OF THE MASTER VALVE ASSEMBLY.
2. TOP OF BOX: 1" ABOVE FINISH SURFACE IN TURF AND 2" ABOVE IN NON-TURF AREAS.

- 1 PLASTIC RECTANGULAR VALVE BOX WITH BOLT DOWN COVER, USE STAINLESS BOLT, NUT, AND WASHER BOX TO BE PLACED AT RIGHT ANGLE TO HARDSCAPE EDGE. LABEL "MV" ONTO LID
- 2 FINISH GRADE
- 3 MASTER CONTROL VALVE
- 4 24" WIRE LOOPS WITH WATERPROOF WIRE CONNECTORS
- 5 VALVE ID TAG
- 6 PVC SCH 40 FEMALE ADAPTER, 2 REQUIRED
- 7 PVC MAINLINE TO FLOW SENSOR, PIPE PER SPECS
- 8 BRICK SUPPORTS (4 TOTAL)
- 9 BRASS UNION
- 10 BRASS NIPPLE TYP.
- 11 3/4" CRUSHED GRAVEL, 2 CUBIC FEET
- 12 LANDSCAPE FABRIC TO COVER BOTTOM AND ALL SIDES OF VALVE BOX
- 13 PVC MAINLINE PIPE FROM BASKET STRAINER PER SPECS



MASTER CONTROL VALVE
SCALE: NTS

IMAGE 8.4.3 | MASTER CONTROL VALVE

a. Product Recommendation- Backflow Device: FEBCO, In-ground Box: Christy's, Master Control Valve: Rainbird

8B | IRRIGATION STANDARDS (CONT)

4. Recycled Water Labeling/Auxiliary Equipment

NOTES:
1. REFERENCE: T. CHRISTY ENTERPRISES, INC. CATALOG PART NO. 3800 OR EQUAL.

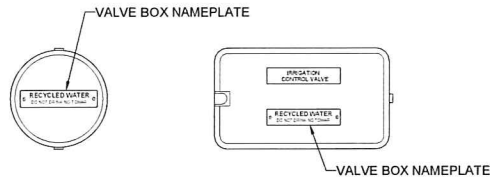


IMAGE 8.4.3 | RECYCLED WATER LABELING

a. Product Recommendation- Labels and tags: Christy's

NOTES:
1. RECYCLED WATER ALUMINUM SIGN PURPLE BACKGROUND AND WHITE LETTERING.

- ① 2" DIA. GALVANIZED STEEL POST PAINTED PURPLE
- ② FASTEN SIGN TO POST WITH BOLTS
- ③ FINISHED GRADE



IMAGE 8.4.3 | RECYCLED WATER SIGNAGE



SAMPLE WARNING TAG, BACKGROUND PURPLE (PANTONE 512) WITH BLACK LETTERING



NOTES:
1. REFERENCE: T. CHRISTY ENTERPRISES, INC. CATALOG PART NO. 3800 OR EQUAL.

IMAGE 8.4.3 | RECYCLED WATER LABELING

- ① BASKET STRAINER. REFER TO LEGEND FOR TYPE.
- ② LOCKABLE ENCLOSURE, REFER TO LEGEND FOR TYPE.
- ③ FLANGED, (SIZE VARIES).
- ④ BRASS NIPPLES (LENGTH AS REQUIRED, 3 REQUIRED, LINE SIZE).
- ⑤ BRASS / BRONZE BALL VALVE.
- ⑥ FINISH GRADE
- ⑦ PVC MAINLINE FROM METER
- ⑧ BRASS ELBOWS (T x T, 2 REQUIRED, LINE SIZE).
- ⑨ CONCRETE THRUST BLACK 3 CUBIC FEET EACH, TWO REQUIRED
- ⑩ PVC MAINLINE TO MASTER VALVE
- ⑪ 6" THICK CONCRETE PAD, SIZE TO ACCOMMODATE ENCLOSURE
- ⑫ PLASTIC LABEL ATTACHED WITH NYLON TIE. LABEL TO READ "RECYCLED WATER - DO NOT DRINK" IN ENGLISH AND SPANISH.
- ⑬ 1/2" MPT DRAIN VALVE.

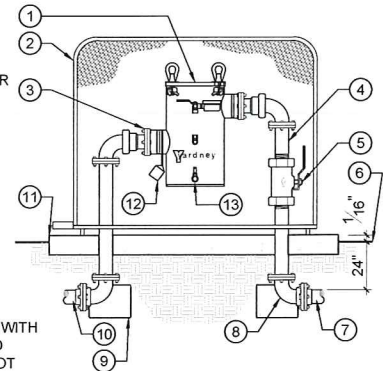


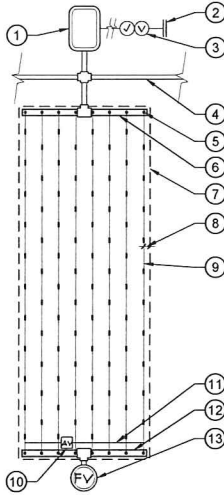
IMAGE 8.4.3 | BASKET STRAINER

b. Product Recommendation- Signage: Christy's, Basket Strainer: Yardney

8B | IRRIGATION STANDARDS (CONT)

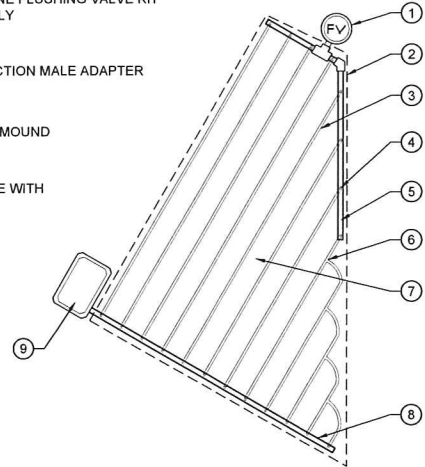
6. Standard Inline Irrigation for Natural Turf near Hardscape

- 1 REMOTE CONTROL VALVE WITH FILTER AND PRESSURE REGULATOR REFER TO LEGEND AND PLANS FOR SPECIFICATIONS
- 2 POINT OF CONNECTION, REFER TO PLANS
- 3 BACKFLOW PREVENTER, REFER TO LEGEND AND PLANS FOR SPECIFICATIONS
- 4 LATERAL LINE TO NEXT PLANTER BED
- 5 MANIFOLD-TO-ELBOW CONNECTION
- 6 PVC SUPPLY MANIFOLD
- 7 AREA PERIMETER
- 8 PERIMETER LATERALS 2" TO 4" FROM EDGE OF DRIPLINE
- 9 DRIPLINE
- 10 AIR/VACUUM RELIEF VALVE (PLUMBED TO TUBING AT EACH HIGH POINT) REFER TO LEGEND FOR SPECIFICATIONS
- 11 AIR/RELIEF LATERAL BLANK TUBING CENTERED ON MOUND OR BERM
- 12 PVC FLUSH MANIFOLD
- 13 FLUSH VALVE, PER LEGEND, PLUMB TO EXHAUST HEADER



END FEED INLINE DRIP
SCALE: NTS

- 1 AIR VACUUM RELIEF & LINE FLUSHING VALVE KIT PLUMBED TO PVC OR POLY
- 2 AREA PERIMETER
- 3 XF DRIPLINE TUBING
- 4 DRIPLINE START CONNECTION MALE ADAPTER
- 5 EXHAUST HEADER
- 6 EASY FIT TEE
- 7 DRIPLINE CENTERED ON MOUND OR BERM
- 8 SUPPLY HEADER
- 9 REMOTE CONTROL VALVE WITH FILTER AND PRV



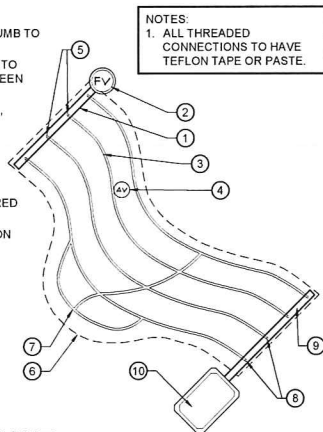
DRIPLINE LAYOUT
SCALE: NTS

IMAGE 8.4.3 | INLINE DRIP LAYOUT

IMAGE 8.4.3 | INLINE DRIP LAYOUT

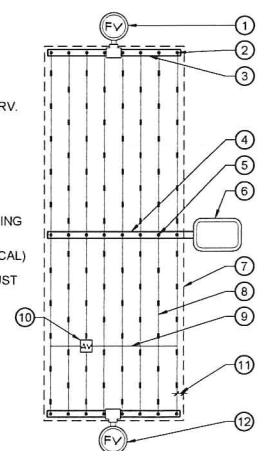
a. Product Recommendation- Inline Drip: Rainbird

- 1 EXHAUST HEADER
- 2 FLUSH VALVE, PER LEGEND, PLUMB TO EXHAUST HEADER
- 3 DRIP TUBING PER LEGEND, NOT TO EXCEED 200 LINEAR FEET BETWEEN HEADERS
- 4 AIR RELIEF VALVE, PER LEGEND, INSTALL AT HIGHEST POINT ON ZONE
- 5 DRIP TUBING END CONNECTION
- 6 AREA PERIMETER
- 7 BLANK TUBING HEADER CENTERED ON MOUND OR BERM
- 8 DRIP TUBING START CONNECTION
- 9 SUPPLY HEADER
- 10 CONTROL ZONE KIT



DRIPLINE LAYOUT
SCALE: NTS

- 1 ZONE FLUSH VALVE PLUMBED TO PVC (TYP)
- 2 MANIFOLD CONNECTION (PVC TO ELL)
- 3 PVC EXHAUST HEADER
- 4 PVC SUPPLY HEADER
- 5 MANIFOLD CONNECTION (PVC TO TEE)
- 6 REMOTE CONTROL VALVE WITH FILTER AND PRV. REFER TO LEGEND AND PLANS FOR SPECIFICATIONS
- 7 AREA PERIMETER
- 8 DRIPLINE LATERAL
- 9 AIR/VACUUM RELIEF LATERAL BLANK TUBING CENTERED ON MOUND OR BERM
- 10 AIR/VACUUM RELIEF VALVE (PLUMBED TO TUBING AT EACH HIGH POINT)
- 11 PERIMETER LATERALS 2"-4" FROM EDGE (TYPICAL)
- 12 FLUSH VALVE, PER LEGEND, PLUMB TO EXHAUST HEADER



CENTER FEED INLINE DRIP
SCALE: NTS

IMAGE 8.4.3 | INLINE DRIP LAYOUT

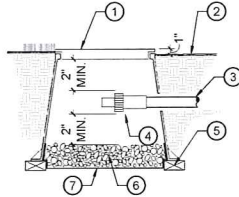
IMAGE 8.4.3 | INLINE DRIP LAYOUT

b. Product Recommendation- Inline Drip: Rainbird

8B | IRRIGATION STANDARDS (CONT)

- ① 6" ROUND PLASTIC VALVE BOX, BRAND "FV" ONTO LID, 1 1/2"-2" HIGH LETTERING
- ② FINISH GRADE
- ③ 3/4" PLOY TUBE
- ④ 3/4" FPT ACTUATED PRESSURE SELF FLUSHING VALVE
- ⑤ BRICK SUPPORTS
- ⑥ 3/4" WASHED CRUSHED GRAVEL, 1/2 CUBIC FEET
- ⑦ LANDSCAPE FABRIC TO COVER BOTTOM AND ALL SIDES OF VALVE BOX

NOTES:
1. TOP OF BOX: 1" ABOVE FINISH SURFACE IN TURF AND 2" ABOVE IN NON-TURF AREAS.
2. INSTALL AT THE LOWEST POINT AND/OR AT THE END OF LATERAL PIPING AS NEEDED.



SELF FLUSHING VALVE

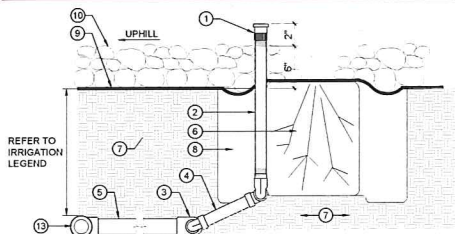
SCALE: NTS

IMAGE 8.4.3 | FLUSH VALVE

d. Product Recommendation- Flush Valve: Toro

7. Standard Point Source irrigation

NOTE:
1. 1 DRIP EMITTER ASSEMBLY PER SHRUB (LESS OTHERWISE NOTED) AT UP HILLSIDE OF EACH PLANT
2. DUE TO HIGH QUANTITIES OF EMITTERS ALL EMITTERS ARE NOT SHOWN ON PLAN. IT SHALL BE THE IRRIGATION CONTRACTOR'S RESPONSIBILITY TO CONSULT WITH LANDSCAPE ARCHITECT TO OBTAIN THE ACTUAL NUMBER OF PLANTS FOR THE PROJECT.
3. IT SHALL BE THE IRRIGATION CONTRACTOR'S RESPONSIBILITY TO ACCURATELY PIPE SIZE ALL EMITTER PIPE SIZE CHART SHOWN ON THIS DETAIL.

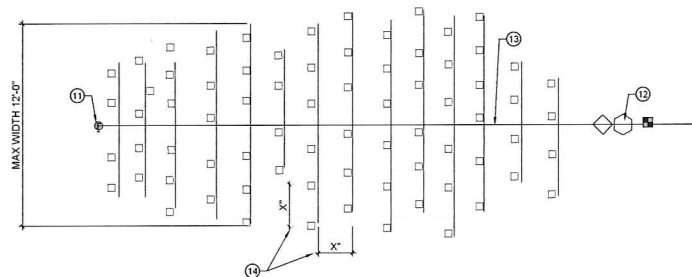


- ① 1/2" THREADED DRIP EMITTER PER LEGEND, INSTALL EMITTER 2" ABOVE ROCK MULCH
- ② 1/2" PVC SCHEDULE 80 RISER, INSTALL PLUMB, INSTALL DIRECTLY ADJACENT TO THE ROOT BALL AND WITHIN THE PLANT PIT.
- ③ SCH 40 PVC 1/2" SLIP x 1/2" THREADED ELL FITTING
- ④ PRE-ASSEMBLED DOUBLE SWING JOINT, PVC TYPE WITH 3/4" SCH 80 NIPPLE AND MARLEX STREET ELLS.
- ⑤ PURPLE PVC LATERAL LINE, SEE SPECIFICATIONS FOR TYPE AND DEPTH REQUIRED
- ⑥ SHRUB ROOT BALL
- ⑦ UNDISTURBED SOIL
- ⑧ SOIL BACKFILL PER SHRUB INSTALLATION DETAIL
- ⑨ FINISHED GRADE
- ⑩ ROCK MULCH
- ⑪ FLUSH VALVE
- ⑫ RCV DRIP CONTROL ZONE KIT
- ⑬ MAIN LATERAL LINE (SCH 40 PVC)
- ⑭ VARIES SEE PLANTING PACING ON PLANTING PLAN



POINT SOURCE SHRUB DRIP EMITTER

SCALE: NTS



EMITTER PIPE SIZING CHART

1/2" PIPE	0 TO 180 GPH
3/4" PIPE	181 TO 360 GPH
1" PIPE	361 TO 840 GPH
1-1/4" PIPE	841 TO 1440 GPH

IMAGE 8.4.3 | POINT SOURCE DRIP

a. Product Recommendation- Point Source Drip Emitters: Rainbird

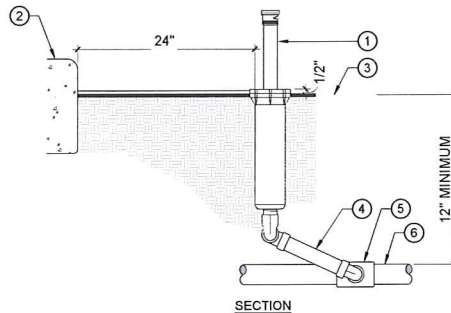
8B | IRRIGATION STANDARDS (CONT)

10. Standard Match Precipitation Spray irrigation (Native Plants or Small Turf areas)

NOTES:

1. LOCATE SPRINKLER HEADS 24" FROM WALKS, CURBS, MOWSTRIP AND HEADER BOARDS EDGE IN TURF AND GROUND COVER AREAS.
2. INSTALL SPRINKLER HEADS PLUMB. ADJUST SPRAYS OR NOZZLE STREAM TO COVER LANDSCAPE AREA WITHOUT OVERSPRAY ONTO PAVING, FENCES, WALLS OR BUILDINGS.

- ① POP-UP SPRINKLER HEAD, SPRAY OR ROTOR REFER TO LEGEND FOR SPECIFICATIONS
- ② INSTALL POP-UP INDICATOR HEAD 24" OFF OF PAVEMENT OR THE EDGE OF PLANTED AREA SERVED BY DRIP TUBING
- ③ INSTALL SPRINKLER HEAD 1/2" ABOVE FINISHED GRADE IN SHRUB AREAS
- ④ PRE-ASSEMBLED TRIPLE SWING JOINT (REFER TO LEGEND), LAY LENGTH TO BE 6" MINIMUM SIZE AS PER SPRINKLER OUTLET
- ⑤ SCH 40 PVC SxSxT TEE FITTING LATERAL x SPRINKLER INLET SIZE
- ⑥ LATERAL LINE, REFER TO SPECIFICATIONS FOR TYPE AND DEPTH REQUIRED



POP-UP SPRAY HEAD SCALE: NTS

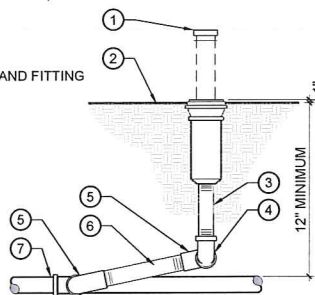
IMAGE 8.4.3 | SPRAY HEAD

a. Product Recommendation- Spray head: Rainbird

NOTES:

1. LOCATE HEAD 24" FROM HARDSCAPING, PLANTING BEDS AND EDGE OF LAWN.
2. LOCATE HEAD 24" FROM ALL STRUCTURES.

- ① POP-UP TURF ROTOR MANUFACTURER AND MODEL AS INDICATED IN LEGEND OR APPROVED EQUAL
- ② FINISH GRADE
- ③ SCH 80 PVC NIPPLE (MINIMUM 4" LONG)
- ④ SCH 40 PVC T x T 90° ELL
- ⑤ MARLEX 90° STREET ELL
- ⑥ SCH 80 PVC NIPPLE
- ⑦ NON-PRESSURE LATERAL LINE AND FITTING



TURF ROTOR HEAD ASSEMBLY SCALE: NTS

IMAGE 8.4.3 | ROTOR HEAD

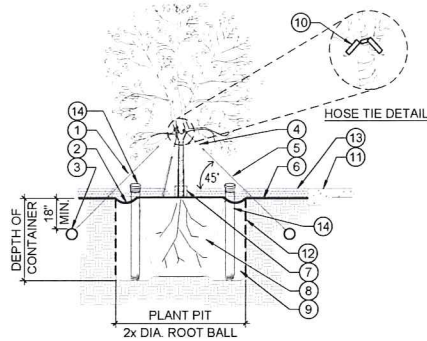
b. Product Recommendation- Rotor Head: Rainbird

8C | PLANTING AND INERT MATERIAL STANDARDS (CONT)

3. Multi-trunk Tree Planting

NOTES:

1. CROWN OF ROOTBALL TO BE 1" ABOVE FINISH GRADE.
2. FOR ADDITIONAL INFORMATION REFER TO PLANTING NOTES AND SPECIFICATIONS.
- 1 1/2" DIAMETER WHITE PVC, OR APPROVED EQUAL
- A SHALLOW BASIN 2" DEEP SHALL BE FORMED AROUND ROOT BALL BELOW FINISH GRADE. TREES PLANTED IN TURF AREAS SHALL NOT HAVE BASINS
- APPROPRIATE METAL OR PVC ANCHOR
- TURNBUCKLE, TYPICAL
- GUY WIRES (3 TOTAL) TO BE OF #9 GAUGE DURABLE ZINC COATED IRON, OR EQUAL EQUALLY SPACED AROUND THE TREE
- FINISH GRADE
- TREES INSTALLED WITHIN TURF AREAS SHALL BE INSTALLED WITH 'ARBOR-GARD', OR EQUAL, AT BASE OF TRUNK
- ROOTBALL
- BACKFILL
- 2-PLY REINFORCED RUBBER OR PLASTIC GARDEN HOSE 1/2"-3/4" DIAMETER, OR EQUAL
- ADJACENT HARDSCAPE WHERE OCCURS PER PLAN
- 24" DEEP ROOT BARRIER INSTALLED ALONG INSIDE OF TREE PIT FOR ALL NEW TREES AND WHERE TREES ARE WITHIN 5 FEET OF HARDSCAPE & STRUCTURES.
- 3" DEEP LAYER OF WOOD MULCH IN SHRUB AREAS - HOLD BACK 6" FROM TREE TRUNK
- 2 - 4" OBSERVATION TUBES WITH 3/4" GRAVEL AT BASE-INSTALL OPPOSITE SIDES OF THE TREE.



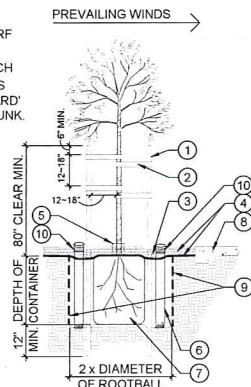
MULTI TRUNK TREE PLANTING & GUYING NOT TO SCALE

IMAGE 8.4.3 | MULTI-TRUNK TREE PLANTING

4. Standard Trunk Tree Planting/ staking

- 1 2"Ø MIN. x 10' LODGE POLE STAKE BOTH SIDES, OR 'TOMAHAWK TREE STABILIZER SYSTEM' (800) 845-3343, OR APPROVED EQUAL
- CINCH TIE, ARBOR TIE, OR APPROVED EQUAL
- A SHALLOW BASIN 2" DEEP SHALL BE FORMED AROUND ROOT BALL BELOW FINISH GRADE. TREES PLANTED IN TURF AREAS SHALL NOT HAVE BASINS.
- FINISH GRADE w/ 3" DEEP WOOD MULCH
- TREES INSTALLED WITHIN TURF AREAS SHALL BE INSTALLED WITH 'ARBOR-GARD' OR APPROVED EQUAL AT BASE OF TRUNK.
- BACKFILL IN ACCORDANCE WITH PROJECT AGRICULTURAL SUITABILITY SOILS REPORT
- ROOTBALL TO BE 1" ABOVE FINISH GRADE.
- ADJACENT HARDSCAPE - WHERE OCCURS PER PLAN
- 24" DEEP ROOT BARRIER INSTALLED AROUND ALL NEW TREES AT OUTSIDE EDGE OF PLANTING PIT, OR ALONG PAVING OR STRUCTURE IF CLOSER THAN 5' EXTEND 6" IN BOTH DIRECTIONS FROM TREE TRUNK.
- 2 - 4" OBSERVATION TUBES WITH 3/4" GRAVEL AT BASE INSTALL ON OPPOSITE SIDES OF TREE.

NOTE:
FOR ADDITIONAL INFORMATION
REFER TO PLANTING NOTES
AND SPECIFICATIONS.



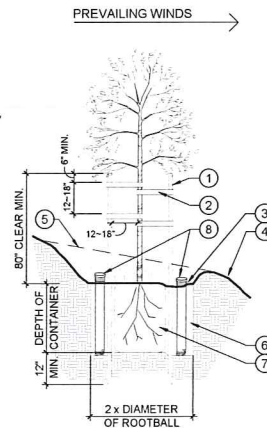
(FOR 15 GAL. & 24" BOX TREES)

TREE PLANTING & STAKING

NOT TO SCALE

NOTE:
FOR ADDITIONAL INFORMATION
REFER TO PLANTING NOTES
AND SPECIFICATIONS.

- 1 2"Ø MIN. x 10' LODGE POLE STAKE BOTH SIDES, OR 'TOMAHAWK TREE STABILIZER SYSTEM' (800) 845-3343, OR APPROVED EQUAL
- CINCH TIE, ARBOR TIE, OR APPROVED EQUAL
- A SHALLOW BASIN 2" DEEP SHALL BE FORMED AROUND ROOT BALL BELOW FINISH GRADE ON DOWNWARD SIDE
- FINISH GRADE
- EDGE OF SLOPE BEYOND BACKFILL IN ACCORDANCE WITH PROJECT AGRICULTURAL SUITABILITY SOILS REPORT
- ROOTBALL
- 2 - 4" OBSERVATION TUBES WITH 3/4" GRAVEL AT BASE INSTALL ON OPPOSITE SIDES OF TREE.



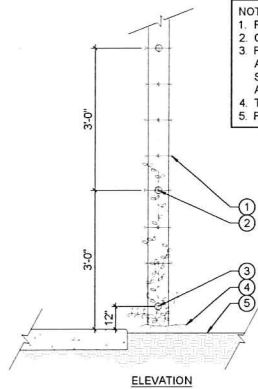
(FOR 15 GAL. & 24" BOX TREES)

TREE PLANTING ON SLOPE

NOT TO SCALE

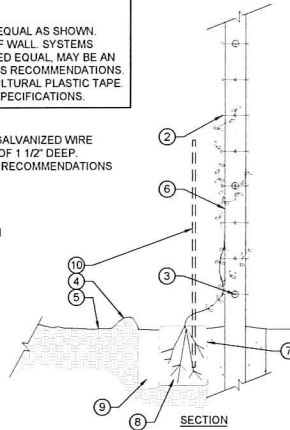
IMAGE 8.4.3 | TREE PLANTING & STAKING

IMAGE 8.4.3 | TREE PLANTING & STAKING ON SLOPE



- NOTES:
1. REMOVE NURSERY STAKE ONCE PLANTED.
 2. CROWN OF ROOTBALL TO BE 1/2"-1" ABOVE FINISH GRADE.
 3. FOR EACH VINE, PLACE EYE SCREWS, EPOXY TIES, OR APPROVED EQUAL AS SHOWN. ATTACH WIRE TO BOTTOM EYE SCREW AND EYE SCREW AT TOP OF WALL. SYSTEMS SIMILAR TO JAKOB STAINLESS STEEL, FACADESCAPE, OR APPROVED EQUAL, MAY BE AN ALTERNATIVE. CONTRACTOR SHALL INSTALL PER MANUFACTURERS RECOMMENDATIONS.
 4. TO SECURE VINE ON TUBULAR STEEL FENCE, USE GREEN HORTICULTURAL PLASTIC TAPE.
 5. FOR ADDITIONAL INFORMATION REFER TO PLANTING NOTES AND SPECIFICATIONS.

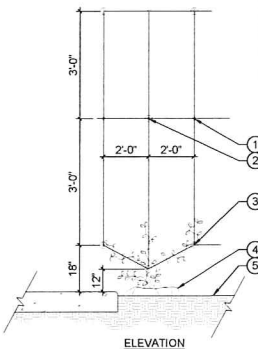
1. ADJUSTABLE CROSS CLAMP
2. GALVANIZED EYE SCREWS, SHALL BE 3/4" DIAMETER. GALVANIZED WIRE SHALL BE #12 GAUGE, TYP. EYE SCREW SET MINIMUM OF 1 1/2" DEEP. VERIFY EYE SCREW LOCATION PER MANUFACTURERS RECOMMENDATIONS
3. ATTACH ALL WIRES TO BOTTOM EYE SCREW
4. 2" DEEP SHALLOW BASIN
5. FINISH GRADE
6. SPREAD VINE ON COLUMN AND SECURE TO WIRE WITH GREEN HORTICULTURAL PLASTIC TAPE
7. SET ROOTBALL TIGHT TO FOOTING
8. ROOTBALL
9. BACKFILL IN ACCORDANCE WITH PROJECT AGRICULTURAL SUITABILITY SOILS REPORT
10. NURSERY STAKE TO BE REMOVED AFTER PLANTING



VINE PLANTING (COLUMN)

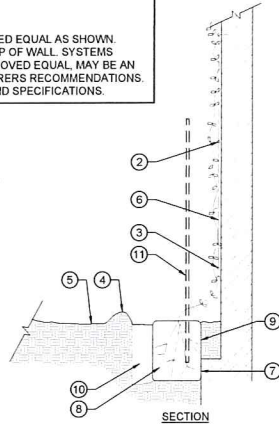
SCALE: NTS

IMAGE 8.4.3 | VINE PLANTING (COLUMN)



- NOTES:
1. REMOVE NURSERY STAKE ONCE PLANTED.
 2. CROWN OF ROOTBALL TO BE 1/2"-1" ABOVE FINISH GRADE.
 3. FOR EACH VINE, PLACE EYE SCREWS, EPOXY TIES, OR APPROVED EQUAL AS SHOWN. ATTACH WIRE TO BOTTOM EYE SCREW AND EYE SCREW AT TOP OF WALL. SYSTEMS SIMILAR TO JAKOB STAINLESS STEEL, FACADESCAPE, OR APPROVED EQUAL, MAY BE AN ALTERNATIVE. CONTRACTOR SHALL INSTALL PER MANUFACTURERS RECOMMENDATIONS.
 4. FOR ADDITIONAL INFORMATION REFER TO PLANTING NOTES AND SPECIFICATIONS.

1. ADJUSTABLE CROSS CLAMP
2. STAINLESS STEEL BOLTS WITH PLATE, EPOXY TIES OR APPROVED EQUAL. GALVANIZED WIRE SHALL BE #12 GAUGE, TYP. BOLT SET MINIMUM OF 1 1/2" DEEP
3. ATTACH ALL WIRES TO BOTTOM STEEL BOLT, EPOXY TIES, OR APPROVED EQUAL
4. 2" DEEP SHALLOW BASIN
5. FINISH GRADE
6. SPREAD VINE ON FENCE AND SECURE TO WIRE
7. SET ROOTBALL TIGHT TO FOOTING
8. ROOTBALL
9. WATERPROOF MEMBRANE TO BE INSTALLED BETWEEN SOIL AND BUILDING WALL OR FOUNDATION
10. BACKFILL IN ACCORDANCE WITH PROJECT AGRICULTURAL SUITABILITY SOILS REPORT
11. NURSERY STAKE TO BE REMOVED AFTER PLANTING



VINE PLANTING (MASONRY)

SCALE: NTS

IMAGE 8.4.3 | VINE PLANTING (MASONRY)

8C | PLANTING AND INERT MATERIAL STANDARDS

II. Inert Materials

1. Boulder Installation

NOTES:

1. ALL BOULDERS SHALL BE BURIED 30% OF OVERALL HEIGHT, WIDTH AND LENGTH.
2. FINAL LOCATION OF ALL BOULDERS SHALL BE PER THE ENGINEER.
3. CONTRACTOR TO PROVIDE SAMPLE BOULDER FOR REVIEW AND APPROVAL BY ENGINEER PRIOR TO PURCHASE.
4. BOULDERS SHALL BE DISTRICT SELECTED BOULDERS

BOULDER MEASUREMENT CHART:

APPROX. SIZE:

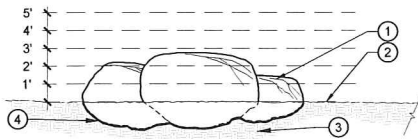
A: 48"x48"x48"

B: 36"x36"x36"

C: 24"x24"x24"

BOULDER: AVAILABLE AT SOUTHWEST BOULDER AND STONE PHONE: (714) 882-1010 OR APPROVED EQUAL.

- 1 REFER TO NOTES FOR SIZES
- 2 FINISH GRADE
- 3 UNDISTURBED NATIVE GRADE OR 95% CERTIFIED COMPACTED SUBGRADE.
- 4 WEED FABRIC BARRIER BENEATH BOULDER - MIRAFI MSCALE WEED FABRIC OR AN APPROVED EQUAL



BOULDER INSTALLATION

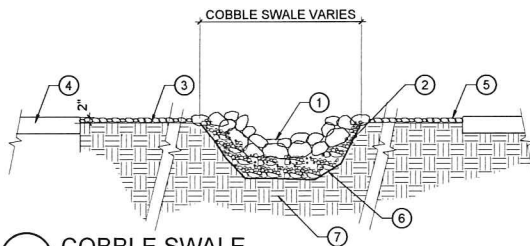
SCALE: NTS

3. Large Diameter Cobble and Rock Groundcover

NOTES:

1. COBBLE SWALE SHALL RECEIVE SELECTED TYPE FROM SOUTHWEST BOULDER AND STONE. COBBLE SIZES SHALL BE 3"-5". COBBLE SHALL BE DRY SET WITH IN GRAVEL AND SAND.

- 1 COBBLE SWALE - REFER TO NOTES AND CONSTRUCTION PLAN FOR LOCATIONS
- 2 4" MIN. SAND AND GRAVEL FOR CLAY SOILS LESS THAN 4" FOR WELL DRAINED SOILS
- 3 PLANTING AREA - FINISH GRADE
- 4 ADJACENT HARDSCAPE
- 5 VARIOUS COBBLE SIZES AND TYPES
- 6 WEED FABRIC BARRIER - MIRAFI MSCALE WEED FABRIC OR AN APPROVED EQUAL
- 7 UNDISTURBED NATIVE SOIL

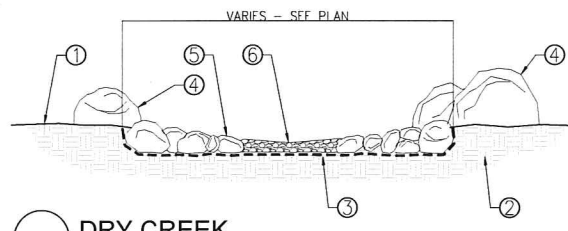


COBBLE SWALE

SCALE: NTS

- 1 FINISH GRADE
- 2 COMPACTED BASE & SUBGRADE PER GEOTECH'S REC.'S
- 3 WEED BARRIER FABRIC
- 4 2'-4'~ BOULDERS - SELECTED BOULDER
- 5 4"-8"~ STREAM BED ROCK - SELECTED COBBLE
- 6 1"-3"~ STREAM BED ROCK - SELECTED COBBLE

NOTE:
BOULDERS & ROCK AVAILABLE AT:
SOUTH WEST BOULDER & STONE, 1-877-792-7625



DRY CREEK

SCALE: 3/4" = 1'-0"

03241-01 dry creek.dwg