

CW/P



architecture

Facilities Master Plan

May 15, 2017



Proven TEAM

CAMBRIDGE WEST PARTNERSHIP, LLC

- Educational & Facilities Master Planning
- Support for Accreditation
- Preparation of 5YCP, Report 17, IPP' s & FPP' s
- Excellent Reputation at the Chancellor' s Office
- Have qualified over \$600 million for State Funding

HPI ARCHITECTURE

- Over three decades of Programming, Planning & Design for Public & Private Colleges & Universities
- Recent involvement with 14 CA Community College Districts @ 22 Colleges
- Recent CA Community College Facilities Master Planning @ 11 Colleges
- More than 1,000,000 s.f. of CA Community College instructional and support space in the last 6 years

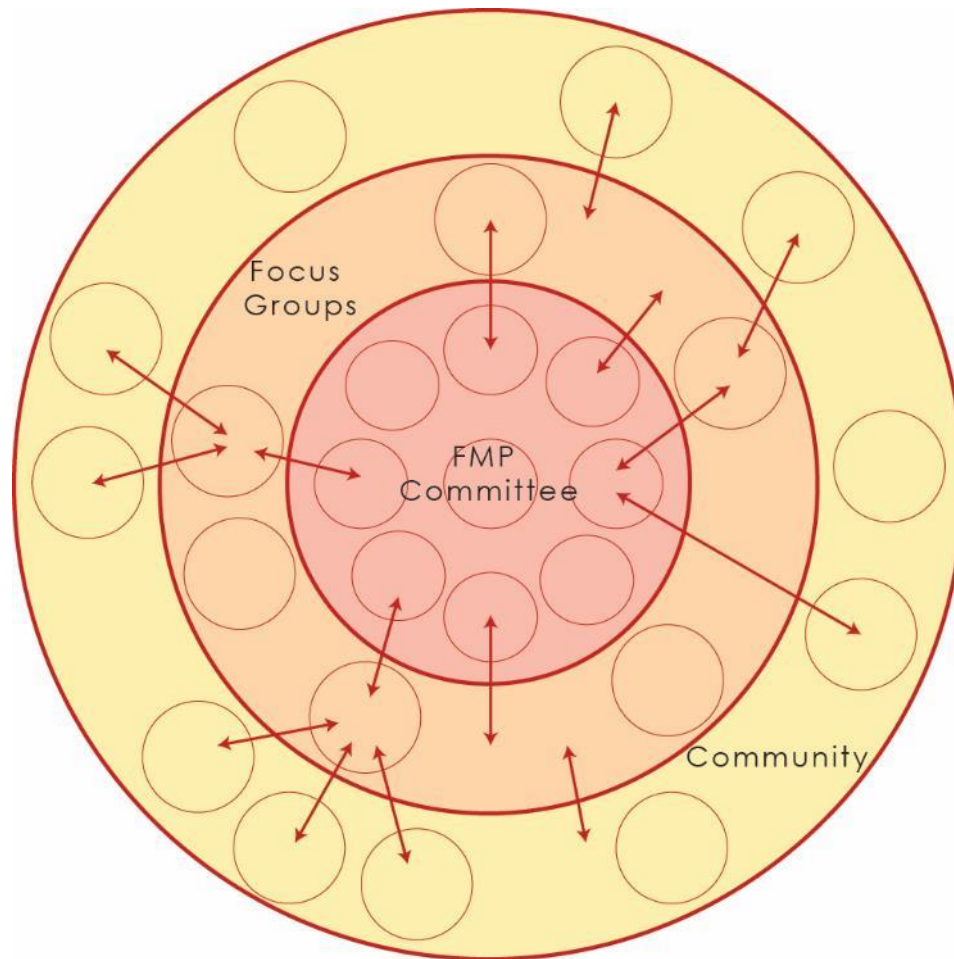
a data driven, community supported master plan

Our TEAM

Client and Project	C W P			H P I Architecture		
	CM Brahmhatt Managing Director	Joyce Black Partner/Project Manager	Fred Trap Senior Associate	Larry Frapwell PIC, Lead Planner	Megan Gaunce Project Manager	Woody Dike Planner/Landscape Architect
Bakersfield Community College - 2012 Educational/ Facilities Master Plan - 153 acres	X	X	X	X	X	X
Barstow Community College - 2016 Educational/ Facilities Master Plan	X	X	X	X	X	X
Cerro Coso Community College - 2012 Educational/ Facilities Master Plan - 340 acres	X	X	X	X	X	X
Coastline Community College - 2011 Facilities Master Plan - 16 acres	X	X	X	X	X	X
Evergreen Valley College - 2015 Educational/ Facilities Master Plan - 130 acres	X	X	X	X	X	X
Golden West College - 2011 Educational/ Facilities Master Plan - 124 acres	X	X	X	X	X	X
Orange Coast College - 2011 Facilities Master Plan - 164 acres	X	X	X	X	X	X
Palo Verde Community College - 2016 Educational/ Facilities Master Plan	X	X	X	X	X	X
Porterville Community College - 2012 Educational/ Facilities Master Plan - 70 acres	X	X	X	X	X	X
San Jose City College - 2015 Educational/ Facilities Master Plan - 70 acres	X	X	X	X	X	X
Southwestern Community College - 2013 Educational/ Facilities Master Plan - 156 acres	X	X	X	X	X	X

proven experience

Outreach PROCESS



THE MOST IMPORTANT TEAM

Facilities Planning Sub-Committee?

- Define Process
- Direction and Recommendations

Focus Groups

- Input and Direct Feedback
- Build Support Internally

Community

- Open and Transparent Process
- Accessible through District website

community supported master plan

Community ENGAGEMENT

tools we use



Surveys



Community Outreach



Hands-On Exploration

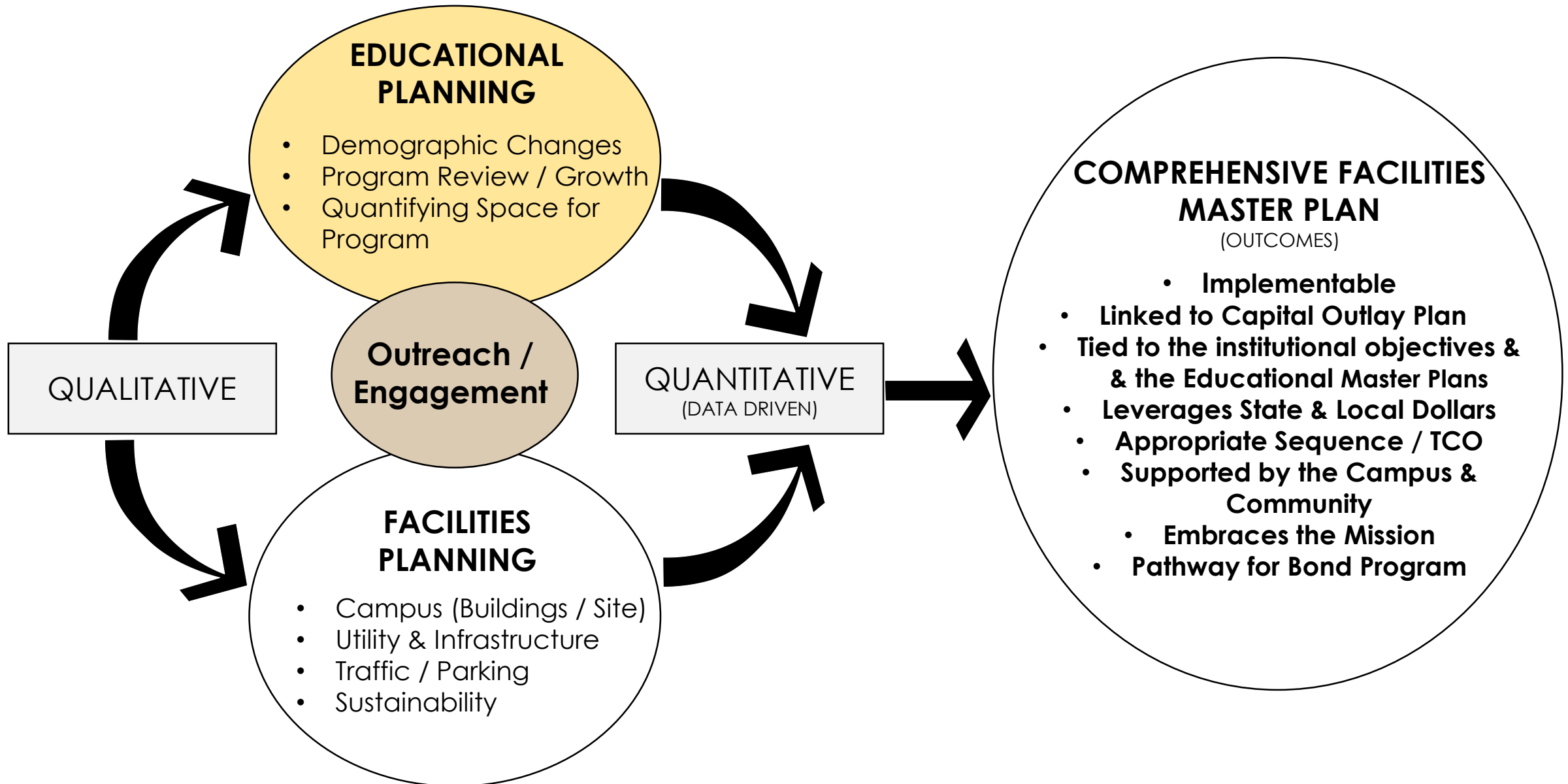


Small Group
Discussions



Workshops

Comprehensive Facilities Master Plan



Connection Between EMP & FMP

EMP Review

- Confirmation from faculty and academic administrators
 - Potential new programs of instruction
 - Changes to modes of delivery and pedagogy
 - Potential facilities implications

Connection Between EMP & FMP

- Review current data of space inventory in FUSION
- Develop a projection of potential future weekly student instructional contact hours by discipline
- Translate those projections into assignable square footage
- Incorporate current construction into future facilities needs
- Determine potential need for additional instructional space

Connection Between EMP & FMP

Using external data sources, but in collaboration with the Office Of Institutional Research

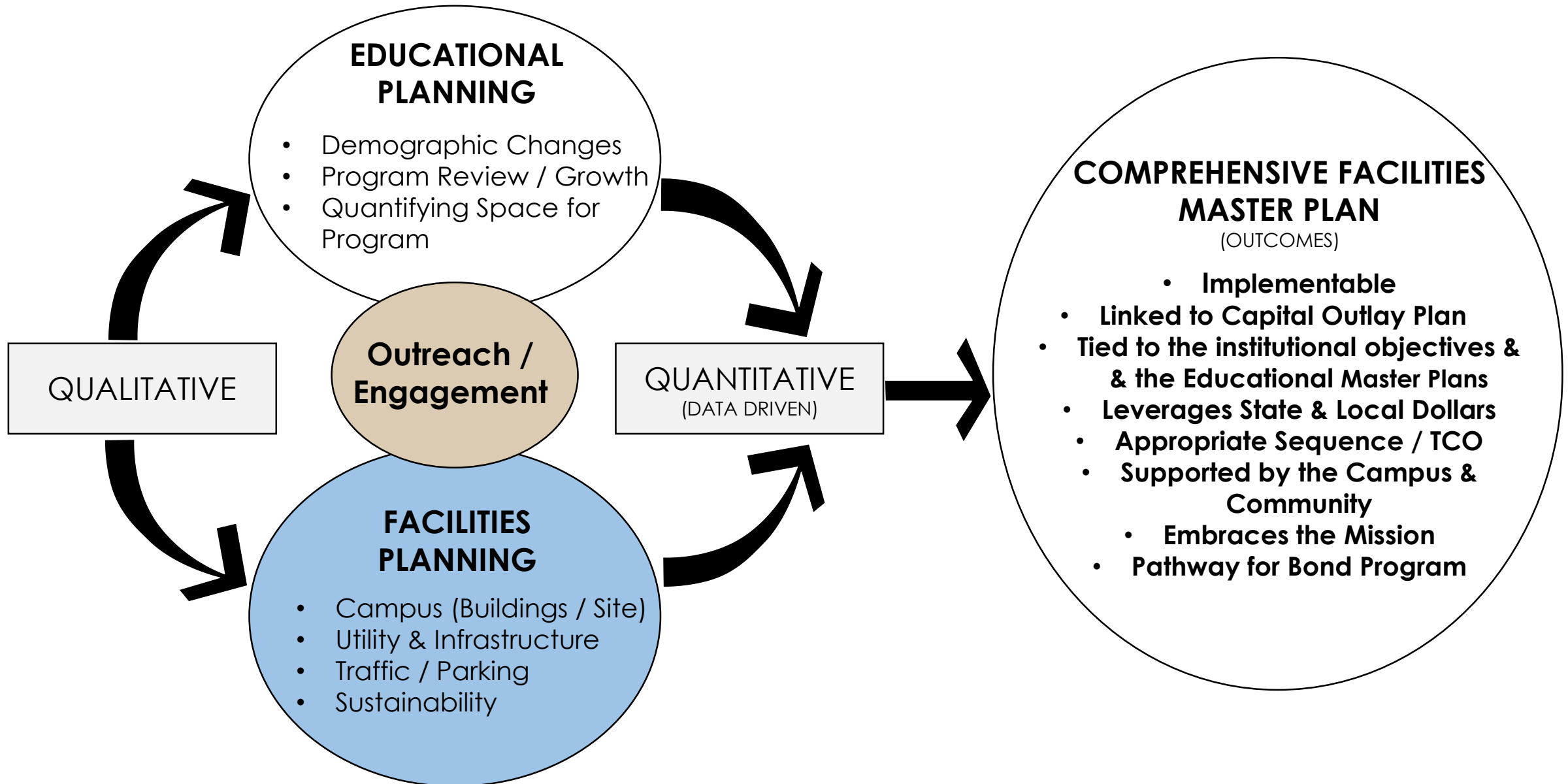
- Review and validate the demographic trends within the District service area
- Review and validate the analysis and discussion found in the College Fact book and other external scan research completed by the staff

Connection Between EMP & FMP

EDUCATIONAL MASTER PLAN – FACILITIES MASTER PLAN LINKAGES

Division/ Area/ Unit	From EMP Growth Projections
Language Arts & Library Division	Enrollment growth projections to 2030 translate to a need for 10 additional classrooms . The need for a Foreign Languages Lab has been identified.
Math, Science, Engineering Division	Enrollment growth projections to 2030 translate to a need for 5 additional Math classrooms and a Biology Laboratory .
Nursing & Allied Health Division	Enrollment growth projections to 2030 translate to a need for 1 additional classroom for this division.
Social Sciences, Arts, Humanities, PE Division	Enrollment growth projections to 2020 translate to 9 additional classrooms for this division in the social sciences disciplines.

*Evergreen Valley College (SJECCD) 2015 EMP Results



APPROACH & METHODOLOGY

ASSESSING SYSTEMS

Pedestrian Circulation

Open Space

Vehicular Circulation /
Service

Parking

Facilities

College



- Highest & Best Use of Existing & Planned Facilities
- Campus Zoning
- Vehicular Access & Circulation
- Parking
- Public Transportation
- Utilities & Infrastructure
- Pedestrian Circulation
- Open Space Character
- Sustainability
- Project Sequencing

APPROACH & METHODOLOGY

Assessing Systems



*Southwestern College 2013 FMP

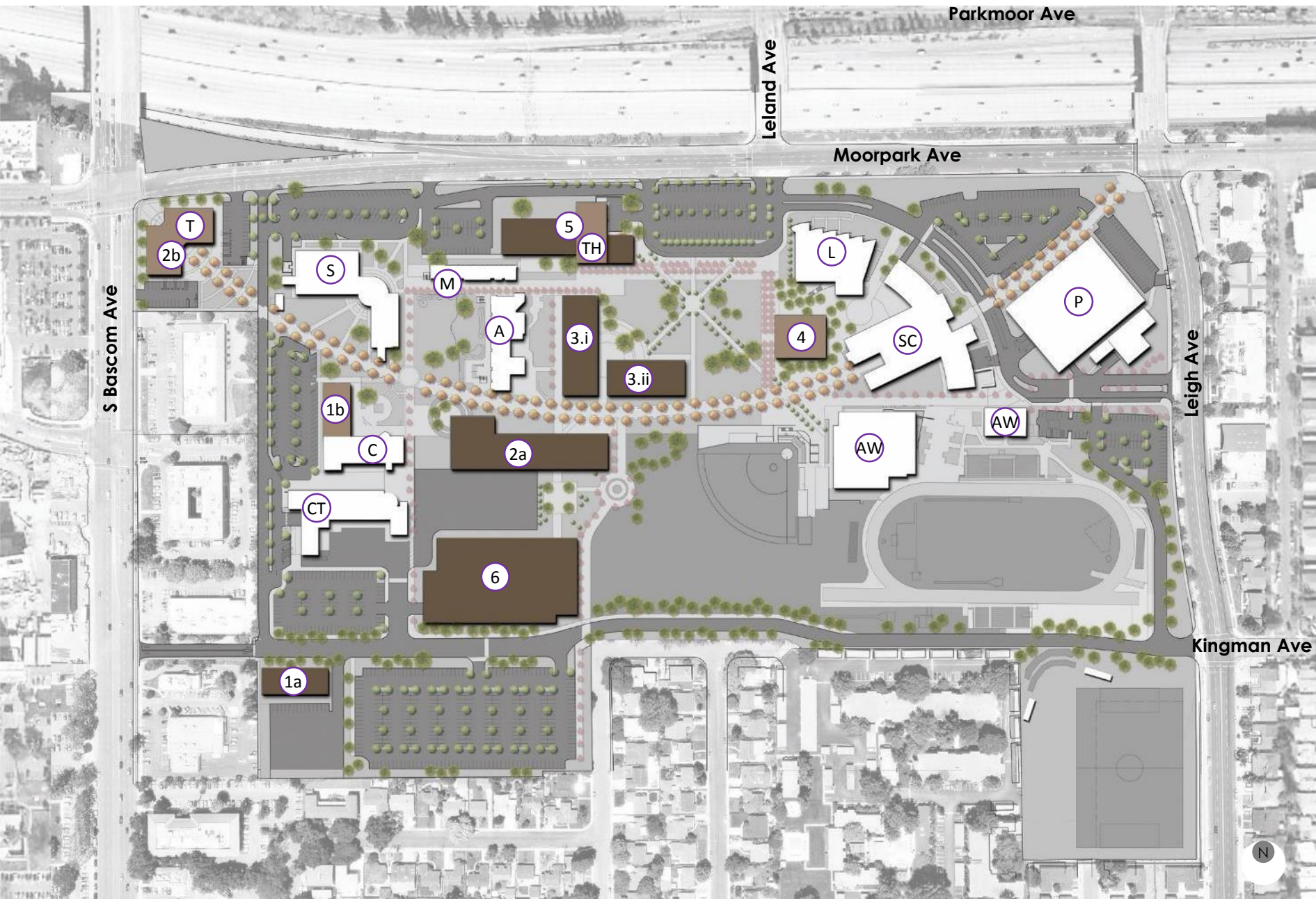
APPROACH & METHODOLOGY

Visualization



*Orange Coast College 2011 FMP

Implementable Program of Work

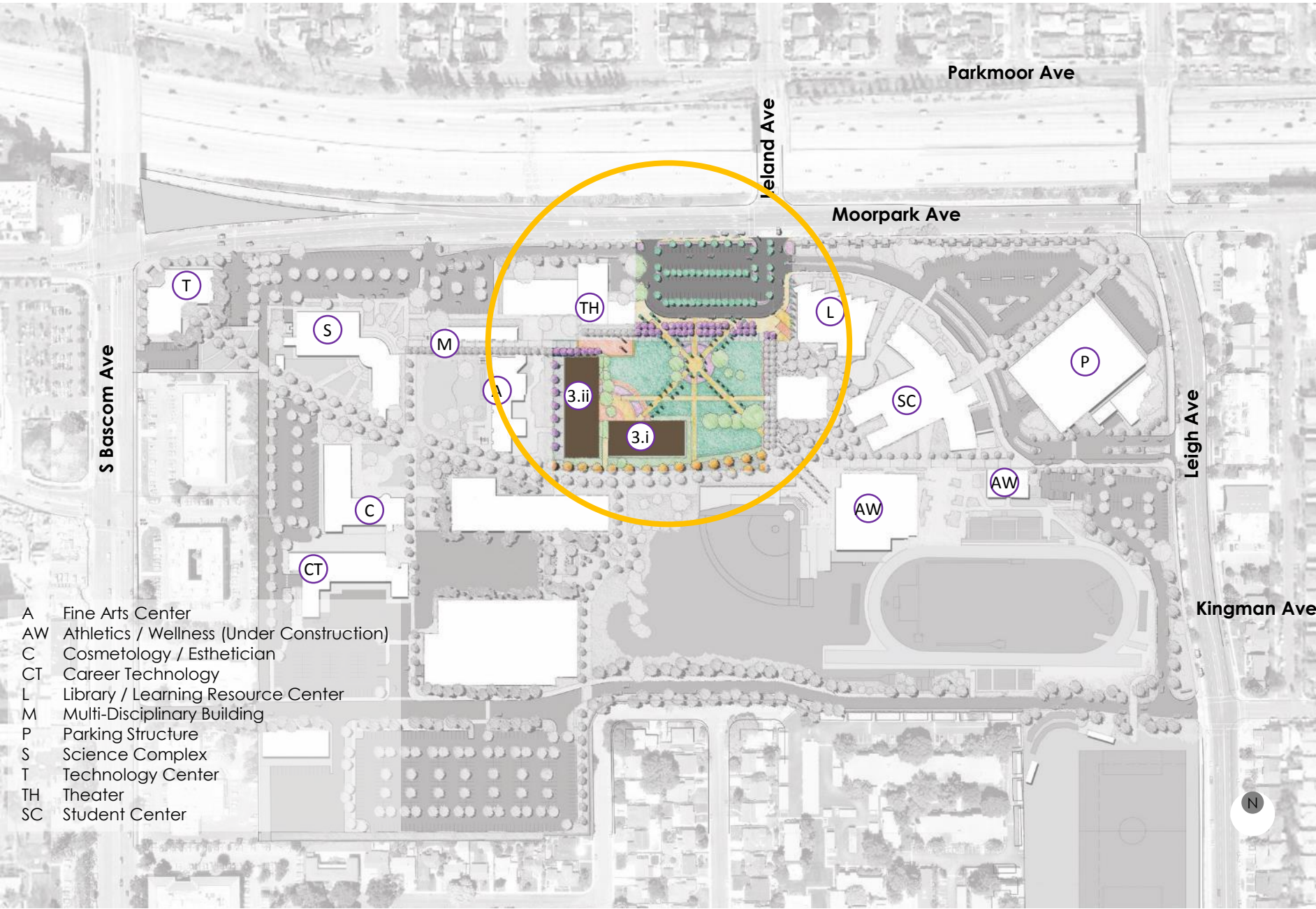


SJCC Program of Work

- 1a M&O / Reprographics
- 1b Cosmetology Expansion / Adaptive PE
- 2a CTE Building
- 2b Technology Center Renovation – Expansion of Dental and medical offices
- 3.i General Education Building Phase I
- 3.ii General Education Building Phase II
- 4 Jaguar Center
- 5 Drama / Theater Lobby
- 6 Parking Structure
- A Fine Arts Center
- AW Athletics / Wellness (Under Construction)
- C Cosmetology / Esthetician
- CT Career Technology
- L Library / Learning Resource Center
- M Multi-Disciplinary Building
- P Parking Structure
- S Science Complex
- T Technology Center
- TH Theater
- SC Student Center

- Existing Building
- New Construction
- Repurpose

Initial Project Plan



3. General Education Building

Programs Phase I:

- Business Lecture
- Large Lecture
- Reading / Study Room
- Office
- Administrative Offices
- Campus IT

Programs Phase II:

- Lecture / Large Lecture
- Foreign Language Lab
- English Lab
- 4930 English Lab
- Science Labs
- Faculty Offices

Site Work:

- Removal of Business & GE Complex
- Improve circulation @Leland / Moorpark
- Expand / Improve Parking & Drop Off
- SJCC Quad

ASF / GSF / Mass:

- I: 27,000 ASF / 41,538 GSF / 3 Stories
- II: 40,640 ASF / 62,523 GSF / 4 Stories
- Project: 67,640 ASF / 104,061 GSF / 3-4 Stories

Vacates:

- Business Building
- General Education Complex

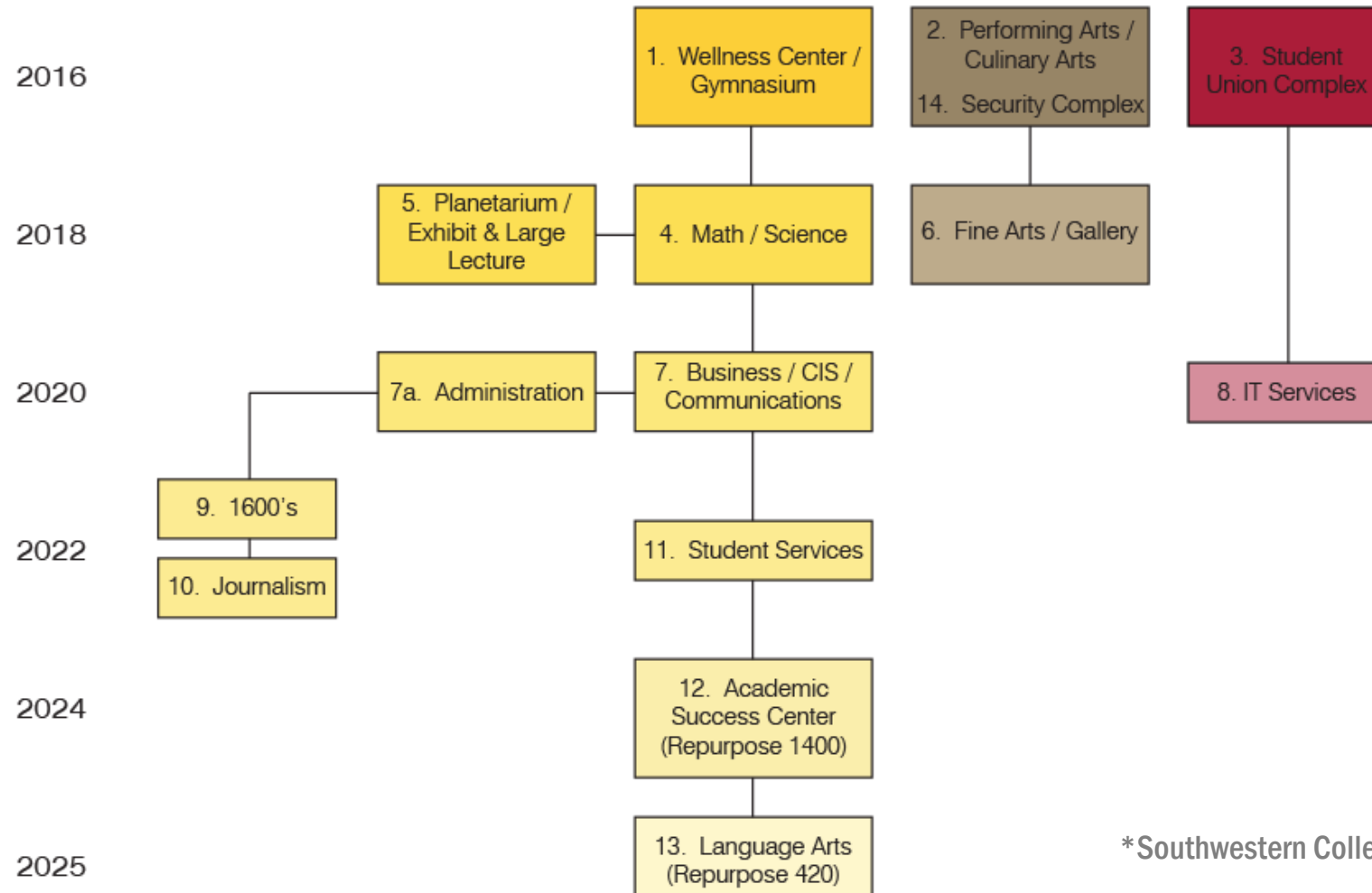
Project Sequence:

- Phased project: Phase 1 is on an open pad. Phase 1 replaces uses in Business Building, allowing Phase 2 to begin

APPROACH & METHODOLOGY

Project Sequencing

Construction
Complete



*Southwestern College 2013 FMP

Success Story

Math / Science Complex

Buildings:

1. Math Science Building
2. Planetarium / Exhibit / Large Lecture Building

ASF / GSF / Mass:

1. 59,720ASF / 91,880 GSF / 2 Stories
2. 7,300ASF / 11,250 SF / 1 Story

Timeline:

2016 – 2018

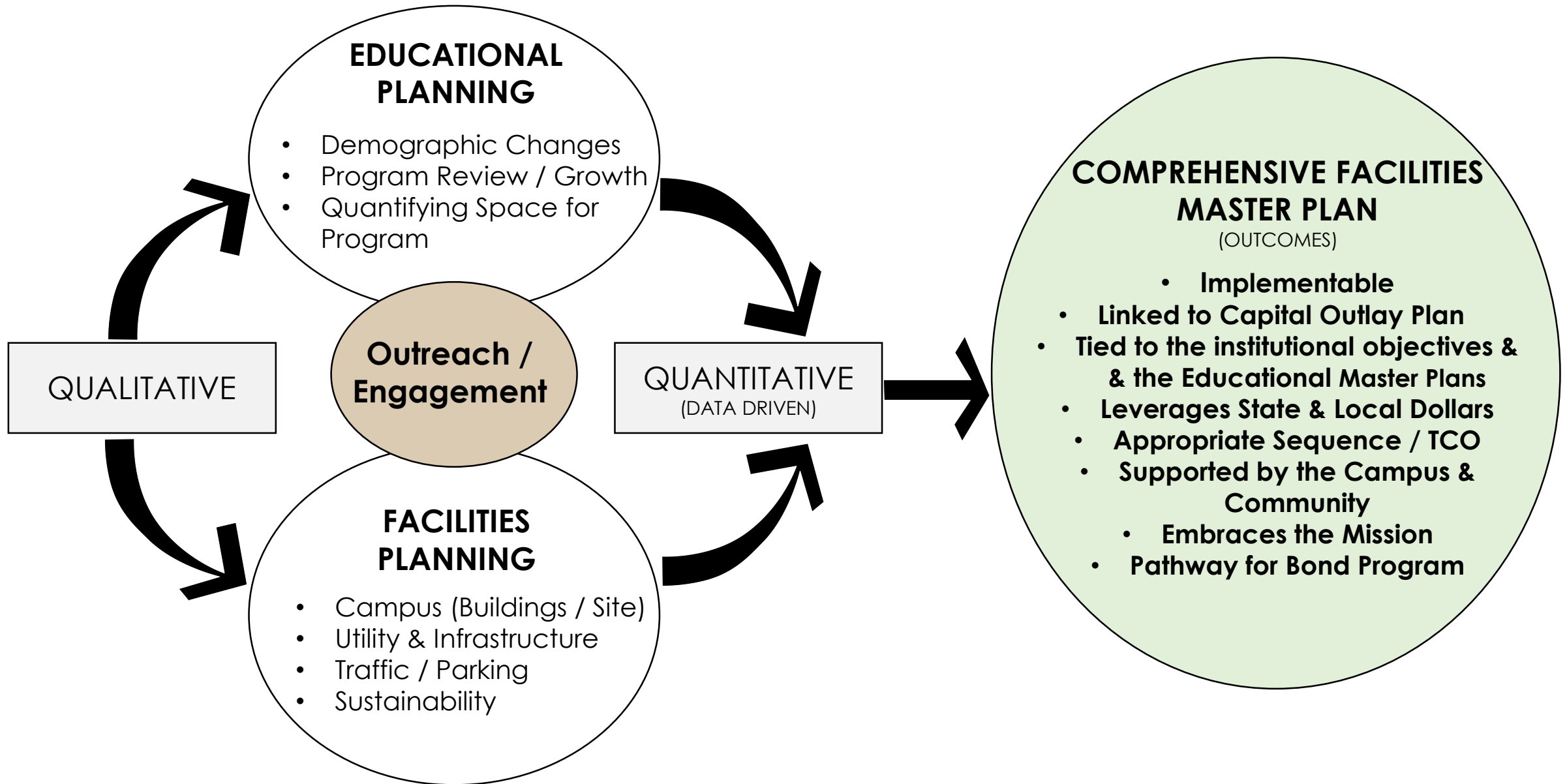
Vacates:

300's & Various Classrooms on Campus



*Southwestern College 2013 FMP

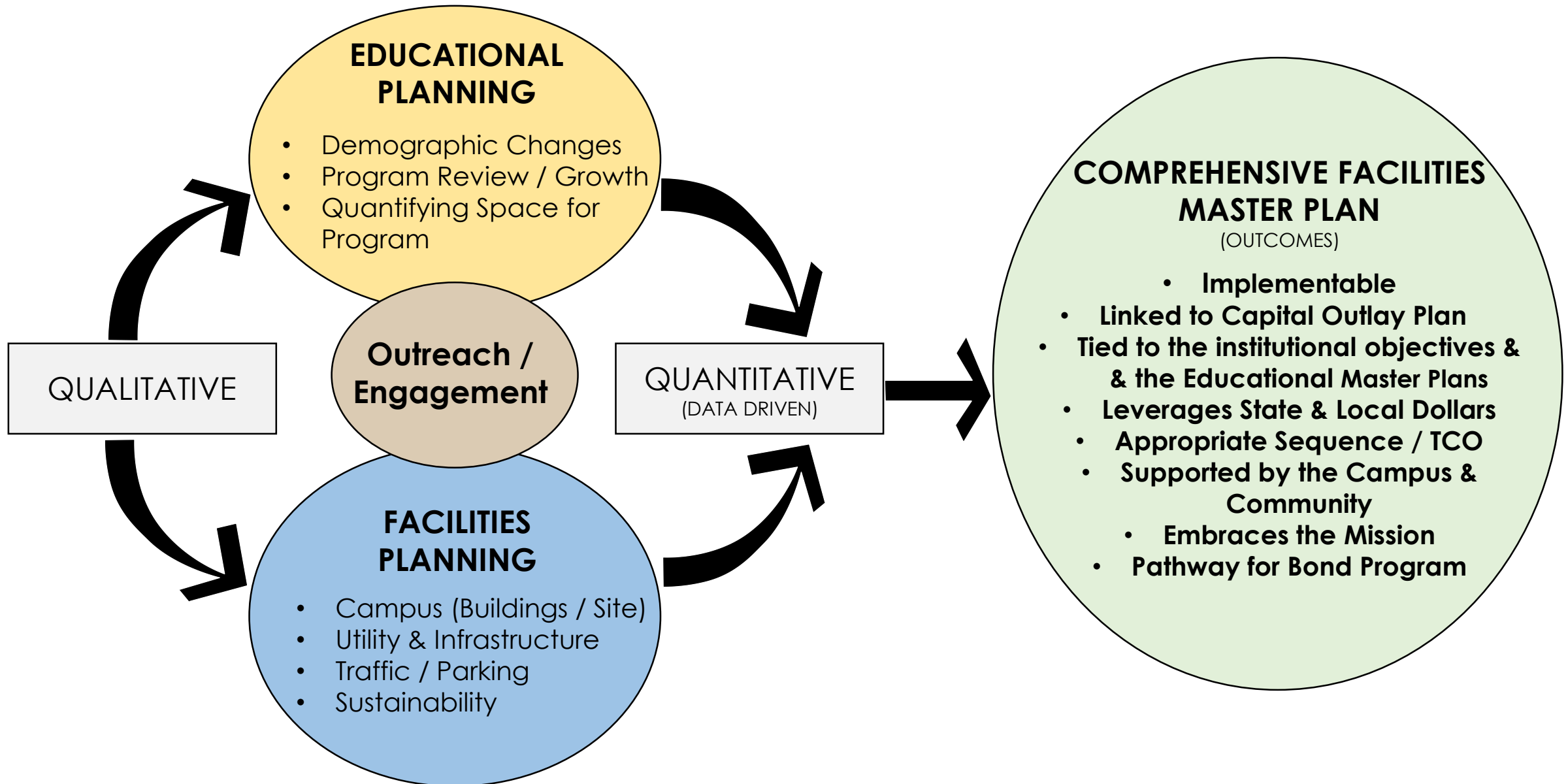
Comprehensive Facilities Master Plan

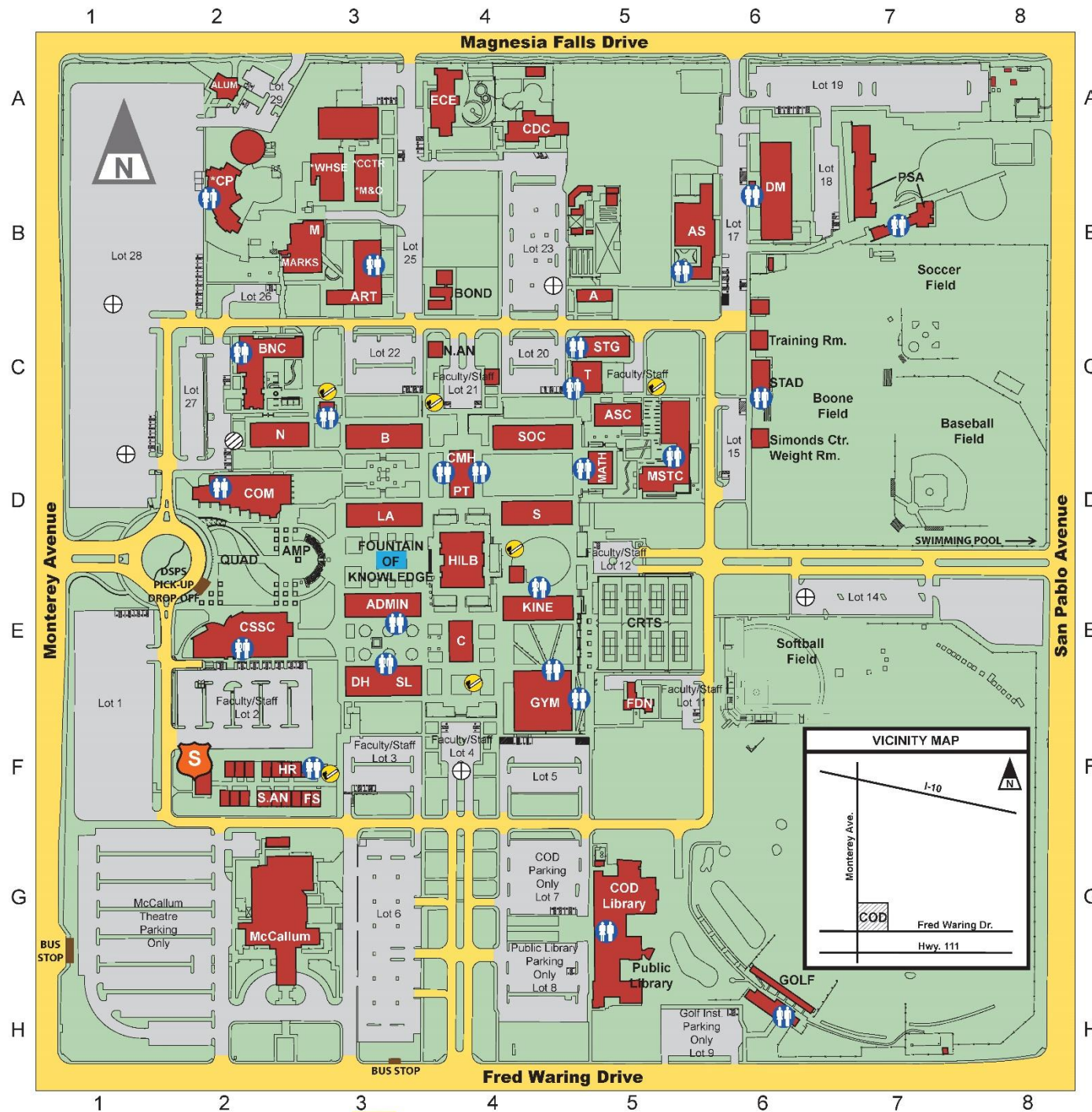


A data driven, visionary master plan that is:

- **supported by campus constituents and community**
 - **implementable**
 - **serves students and community**

Comprehensive Facilities Master Plan





A	Agricultural Sciences.....	B5
ADMIN	Administration.....	E3
ALUM	Alumni Centre.....	A2
AMP	Amphitheatre.....	D3
ART	Art.....	B3
AS	Applied Sciences.....	B6
ASC	Academic Skills Center.....	C5
B	Business Building.....	D3
BNC	Barker Nursing Center.....	B2
CDC	Child Development Center.....	A4
CMH	Carol Meier Lecture Hall.....	D4
	COD Library.....	G5
CP	Central Plant.....	B3
CCTR	Copy Center.....	B3
COM	Communication.....	D2
CRTS	Tennis Courts.....	E5
CSSC	Cravens Student Services Center.....	E2
DM	Diesel Mechanics.....	B6
DH	Dining Hall.....	E3
ECE	Early Childhood Education Center.....	A4
FS	Fiscal Services.....	F2
FDN	Foundation.....	F5
GOLF	College Golf Center.....	H6
GYM	Gymnasium.....	F4
HILB	Hilb.....	D4
HR	Human Resources.....	F2
KINE	Kinesiology.....	E4
LA	Liberal Arts.....	D3
M	Music Classroom.....	B3
M&O	Maintenance & Operations.....	B3
MARKS	Walter N. Marks Center for the Arts....	B3
MATH	Math.....	D5
	McCallum Theatre.....	G2
MSTC	Math Science Technology Center.....	D5
N	Nursing.....	D2
N.AN	North Annex.....	C4
PSA	Public Safety Academy.....	B7
PT	Pollock Theatre.....	D4
	Public Library.....	H5
QUAD	Student Plaza (Drop-off & Walkway).....	D2
S	Science.....	D4
	Security.....	F2
	Simonds Center Weight Room.....	C6
S.AN	South Annex.....	F2
SOC	Social Sciences.....	D4
STAD	Stadium.....	C6
STG	Stagecraft Shop.....	C5
SL	Student Life.....	E3
T	Theatre Too.....	C5
	Training Room.....	C6
WHSE	Warehouse.....	B3